

The logo for ALISA, featuring a stylized blue 'A' shape above the word 'ALISA' in a serif font.

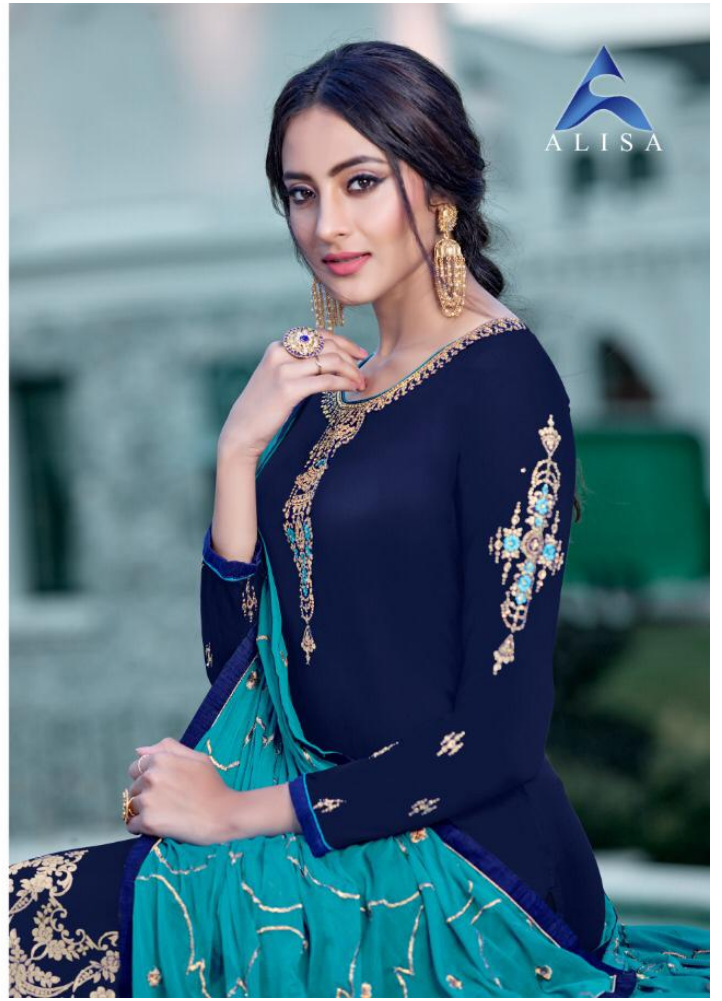
ALISA

A woman with dark hair styled in a bun, wearing a vibrant red long-sleeved top with intricate gold embroidery on the neckline and sleeves. She is also wearing a red shawl with a gold pattern and large, ornate gold and red earrings. Her hands are clasped in front of her. The background shows an outdoor setting with a pool and a building.

SANJH



D.No.2301



The logo for ALISA, featuring a stylized blue 'A' shape above the brand name in a serif font.

ALISA

A woman with dark hair styled in a bun, wearing a vibrant red long-sleeved dress with intricate gold embroidery on the neckline and sleeves. She is also wearing a red shawl with a gold pattern and large, ornate gold and red earrings. Her hands are clasped in her lap. The background shows an outdoor setting with a swimming pool and lounge chairs.

SANJH

ALISA



D.No.2302



Simplicity of beauty



We bring perfection of craftsmanship
to embellish charm in your personality.





ALISA



D.No.2303



Simplicity of beauty



We bring perfection of craftsmanship
to embellish charm in your personality.





ALISA



D.No.2303

ALISA



D.No.2304





The Queen of culture

Fashion brings radiance and apalla
and we bring vilality to the fashion.



The Essence of great fashion

Fashion is a language some know it,
some learn it some never will like an instinst...



The logo for ALISA, featuring a stylized blue 'A' shape above the word 'ALISA' in a serif font.

ALISA

A woman with dark hair styled in a bun, wearing a vibrant red long-sleeved tunic with intricate gold embroidery on the neckline and sleeves. She is also wearing a red shawl with a gold border and a gold pattern. Her hands are clasped in front of her, and she is wearing large, ornate gold and red earrings and a gold ring. The background shows an outdoor setting with a pool and a building.

SANJH