



RUKMINI-03

RAJGURU



BEING BEAUTIFUL STEMS FROM HOW YOU FEEL ABOUT YOURSELF FROM WITHIN. SAME IS THE RECIPE FOR LOOKING MAJESTIC AND ROYAL. THIS KESARI SAREE IS APT TO EMBELLISH ANY LADY WITH CLASS. A SAREE FROM OUR COLLECTION WILL ALWAYS ACE THE REGAL LOOK OF THE QUEEN. LET THE RICHNESS OF THE COLORS AND EMBROIDERY BRING A WHOLE NEW KINGDOM TO LIFE.



RUKMINI-03

RAJGURU

ENCHANTING
UNINHIBITED
EMANCIPATING



RUKMINI-02

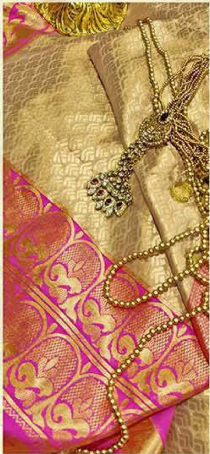
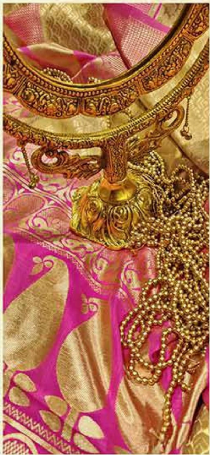


RUKMINI-04

 RAJGURU

DRAPING A SAREE OF YOUR CHOICE IS A FORM OF SELF-EXPRESSION; THERE ARE HINTS ABOUT WHO YOU ARE IN WHAT YOU WEAR. A PEARLY WHITE SAREE IS AN EPIHOME OF TRANQUILITY THAT AT ONCE PUTS ALL THE DOUBTS TO REST. AFTER ALL, IT'S THE UNDISPUTED QUEEN OF ALL THE COLORS. THIS TRADITIONAL FASHION ON DRESSING UP ACES IN BEING THE STATEMENT PIECE WITH ITS ELABORATE EMBROIDERY AND HANDIWORK.





ORIGINALITY OFTEN TRACES BACK TO THE DEEP COLOR OF VERMILION THAT AN INDIAN LADY EMBRACES LIKE HER OWN SHADE. MESMERIZING IN ALL ITS ASPECTS, THIS SAREE BRINGS OUT THE MOST AUTHENTIC BEAUTY OUT OF A WOMAN WITH ITS CHARMING PATTERN AND EFFORTLESS ALLURE. LET ITS EVIDENT GRACE OF THE DRAPES BRINGS OUT THE FOLKLORE OF SAVITRI TO LIFE AND ADD ON TO YOUR BEAUTY AS A WOMAN.

 RAIGURU



RUKMINI-05



RUKMINI-03



RUKMINI-01



RUKMINI-02



RUKMINI-03



RUKMINI-04



RAJGURU

BEING BEAUTIFUL STEMS FROM HOW YOU FEEL ABOUT YOURSELF FROM WITHIN. SAME IS THE RECIPE FOR LOOKING MAJESTIC AND ROYAL. THIS KESARI SAREE IS APT TO EMBELLISH ANY LADY WITH CLASS. A SAREE FROM OUR COLLECTION WILL ALWAYS ACE THE REGAL LOOK OF THE QUEEN. LET THE RICHNESS OF THE COLORS AND EMBROIDERY BRING A WHOLE NEW KINGDOM TO LIFE.



RUKMINI-05

