







K-2401



*Not-so-basic*  
**STYLE**

Kirti adds a bit of drama to her look with  
wavy, cut-out borders and a  
not-so-basic sari with a heavy border and  
tassels and a matching blouse.



K-2403



## FABULOUS

Like the epitome of elegance, wear elegance  
in the reality with colorful fabulous sarees, turning  
forming every woman into a divine all beauty.



K-2405



### Born to *Style*

idea, it's a balance of elegance and modernity. Born-to-style is a name that can be used to describe a wide range of beauty and style products. It's a name that's easy to remember and easy to use.





**CULTURE  
& STYLE**

When a woman wears a saree, she carries  
with her all the values and traditions  
of their respective societies.

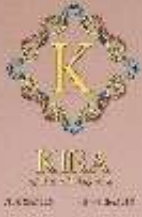


K-2402



**GRAND**  
*lady*

Kira, the epitome of elegance, is a blend of  
finesse and grace. It is a timeless classic,  
adorned with intricate details, and a touch of  
glamour, and is a true masterpiece.



K-2404



*she's*  
**GORGEOUS**

Kira, the epitome of elegance and grace, exudes a finesse of her class beauty with exclusive designs, adorning women in a variety of their magnificent.



K-2406



K-2401



K 2402



K 2404



K 2405



K-2403



K 2406