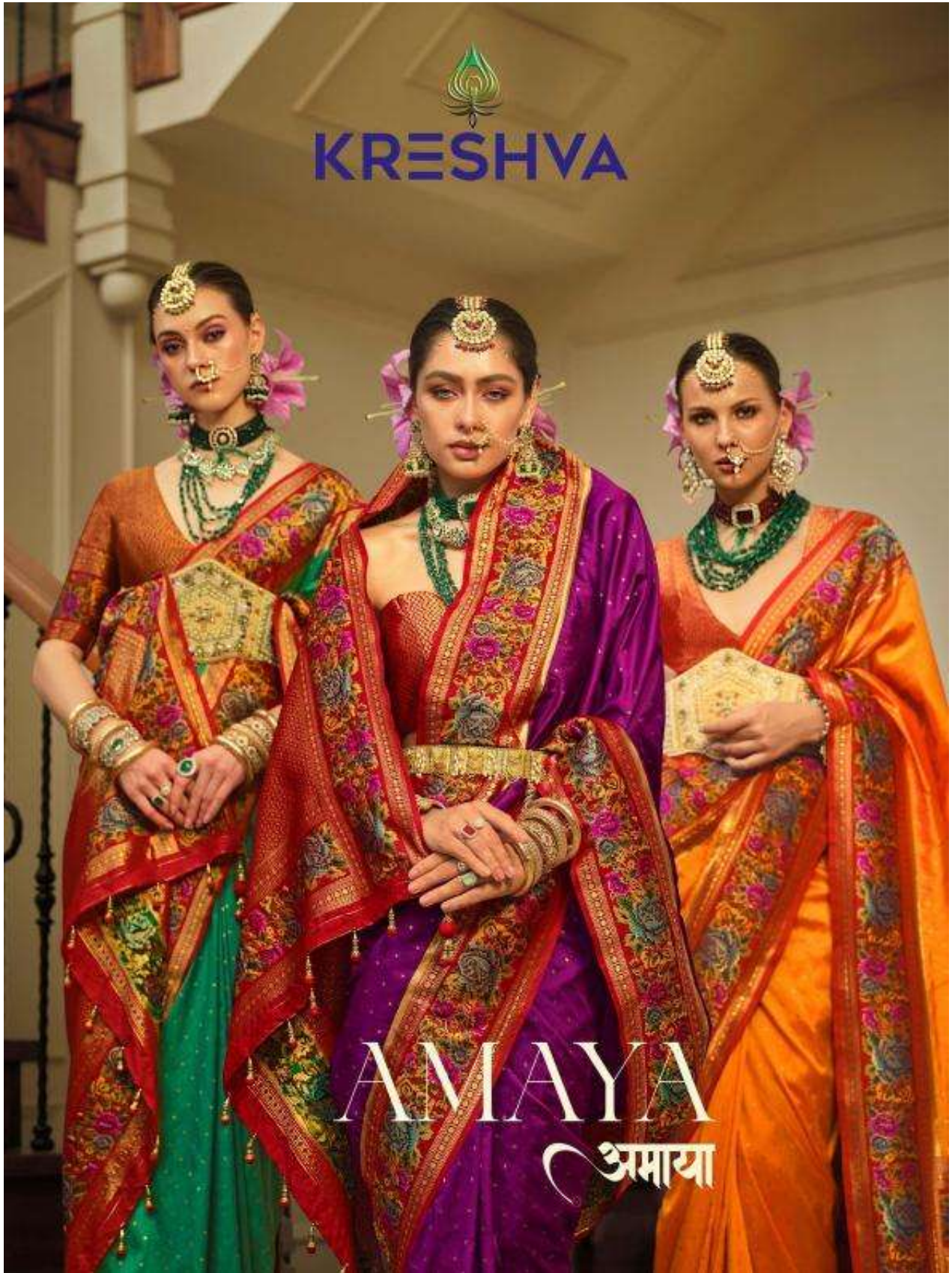




KRESHVA



AMAYA  
अमाया



KRESHVA

K-451

  
**KRESHVA**



© 2014 Kreshva. All rights reserved. No part of this publication may be reproduced, stored in a retrieval system, or transmitted, in any form or by any means, electronic, mechanical, photocopying, recording, or by any information storage and retrieval system, without the prior written permission of Kreshva.

K-451



  
**KRESHVA**



© 2018 Kreshva. All rights reserved. No part of this publication may be reproduced, stored in a retrieval system, or transmitted, in any form or by any means, electronic, mechanical, photocopying, recording, or by any information storage and retrieval system, without the prior written permission of Kreshva.

**K-452**

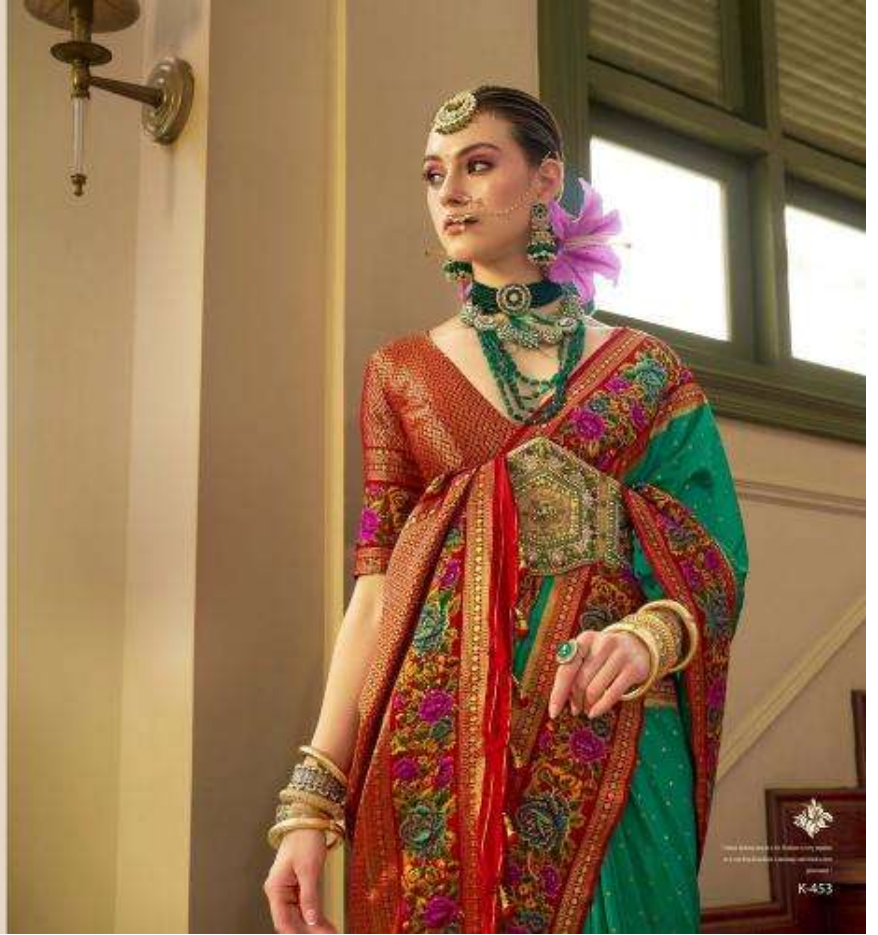


KRESHNA



K-453

  
**KRESHVA**





K-445



K-446



K-447



K-448



K-449



K-450



K-451



K-452



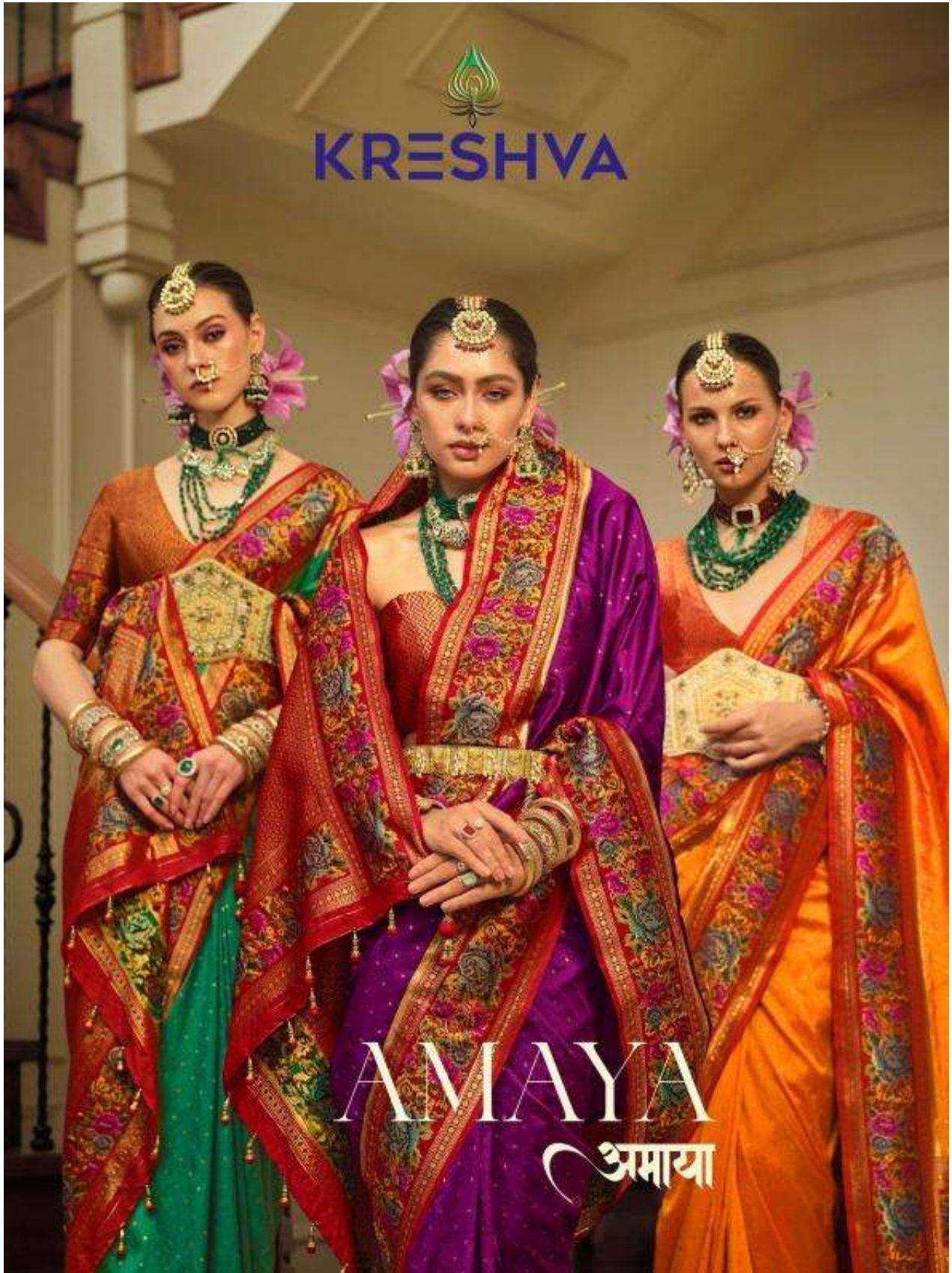
K-453

KRESHVA

AMAYA  
अमाया



KRESHVA



AMAYA  
अमाया









  
**KRESHVA**



**THE GLAMOUR**  
© 2024 Kreshva Pvt. Ltd. All rights reserved. Kreshva is a registered trademark of Kreshva Pvt. Ltd.

K-445





  
**KRESHVA**



  
K-446



KRESHVA

A NEW  
FASHION  
AFFAIR





KRESHVA

DIFFERENT  
COLLECTION

Handmade jewelry collection  
K-447







  
**KRESHVA**



**THIS SEASON  
MAKE DIFFERENT**

© 2018 Kreshva. All rights reserved. Kreshva is a registered trademark of Kreshva. All other trademarks are the property of their respective owners.

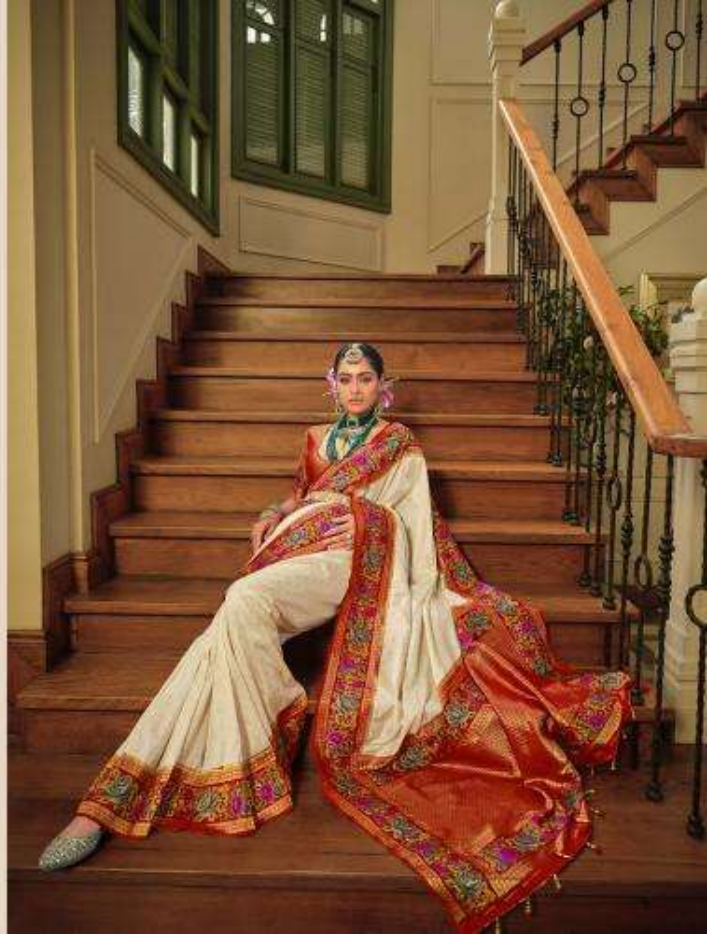
K-448

  
KRESHVA



  
K-446

"The best choice is the best. The best before the world."





DIFFERENT  
COLLECTION


1. 100% Cotton and Silk  
2. 100% Cotton and Silk  
3. 100% Cotton and Silk

K 449

KRESHVA



**KRESHVA**



*"This collection is a tribute to the rich heritage of Indian fashion and jewelry, showcasing the finest craftsmanship and traditional motifs."*

The image is a promotional graphic for the brand KRESHVA. It features a central photograph of a woman in traditional Indian attire, heavily adorned with jewelry, sitting in a chair. The brand name "KRESHVA" is prominently displayed at the top. The background is a light beige color with large, faint letters "D", "I", "N", "G" visible. A small decorative element is placed below the photograph, followed by a line of italicized text.