

*Style
Eternal*

A breath taking array of fine detailing & intricate design inspired by Indian culture.....


SAYURI[®]
— Designer



Adah

REFINING THE FUTURE OF FASHION

Look Gorgeous
EVERYDAY



Every creation was classic yet versatile with a modern touch given even the most traditional garment while retaining its richness of embroidery, detailing & textures

*Style
Eternal*

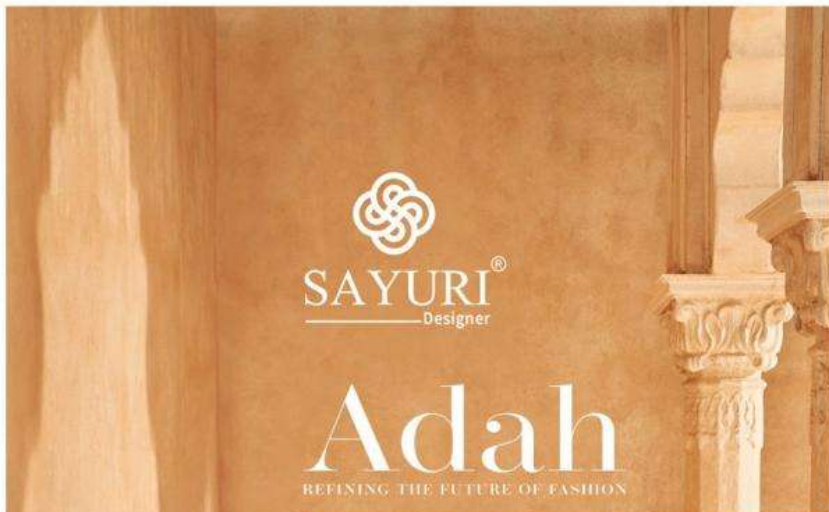
A breath taking array of fine detailing & intricate design inspired by Indian culture.....


SAYURI[®]
Designer



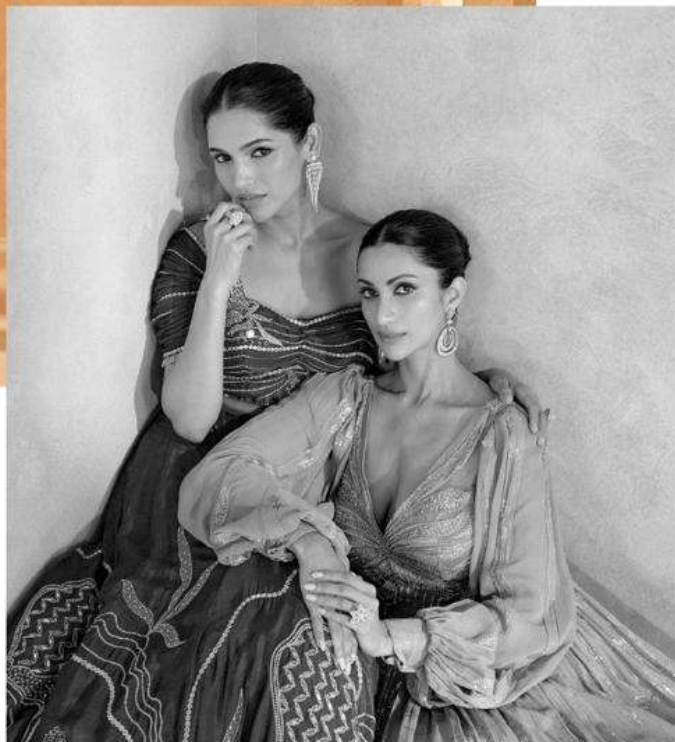
Adah

REFINING THE FUTURE OF FASHION




SAYURI®
Designer

Adah
REFINING THE FUTURE OF FASHION







She wears a crown built from her
spine of inner strength and
modesty with sparkling jewels to
represent her each and every quality.

D No - 5629



■ ■ ■ ■ ■
SAYURI®
— Designer

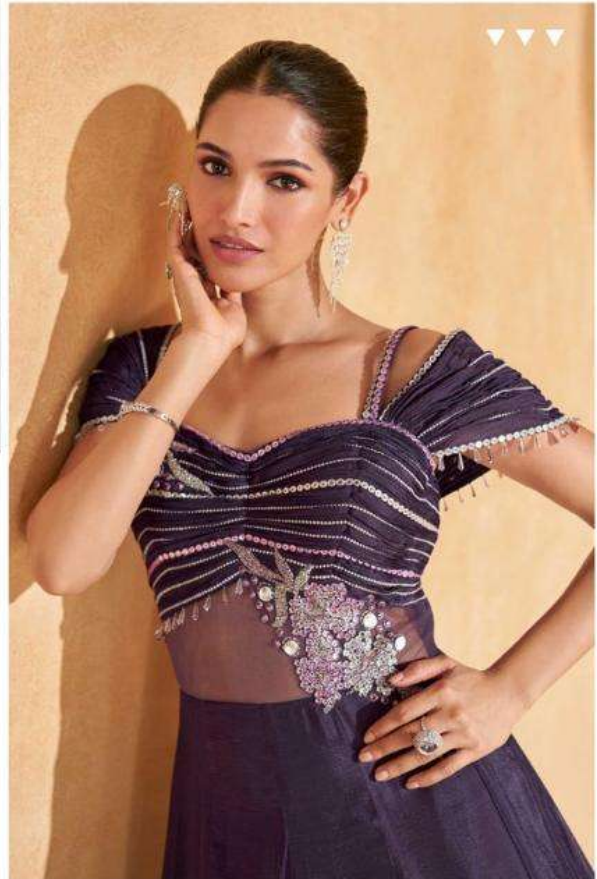




THE MOST POWERFUL ART



SAYURI[®]
Designer



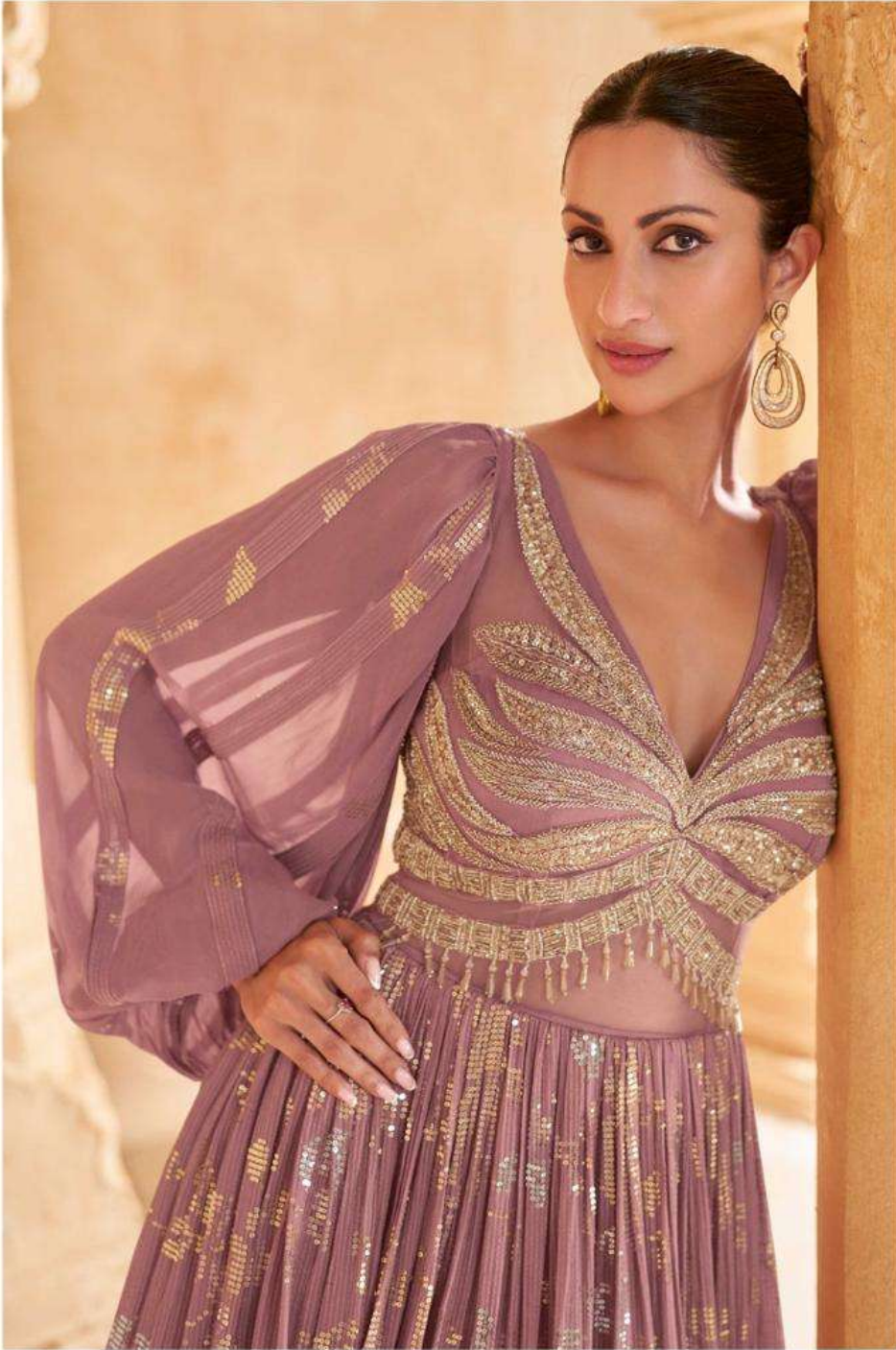
Fashion is the most powerful art.

It's movement, design and architecture all in one.

It shows the world who we are and who we'd like to be.

D No - 5629

SAYURI[®]
Designer



D No - 5630









SAYURI®
Designer

Celebrate This Season with Color Contrast that Promise to Shock the Sun &
Revel in the Surprise of this Hot New Trend.



THE MOST POWERFUL ART



SAYURI[®]
Designer



Embrace your love for prints.

Whether you mix & match or go head-to-toe.

Just remember there are no rules.

D No - 5631





D NO-5629



D NO-5630



D NO-5631


SAYURI[®]
Designer

Adah
REFINING THE FUTURE OF FASHION