



jr
JOH RIVAAJ

JANELLE

Vol-910



jr
JOH RIVAAJ

JANELLE

Vol-910

G
L
A
M
O
R
F
I
N
E
T
O
U
C
H

T H E

Q U E E N

O F
C U L T U R E

glimpse of heaven



JOH RIVAAJ

Q
E
N
O
F
C
U
L
T
U
E



JOH RIVAAJ

Dipped in
ELEGANCE
Deep contemplation with
elegant COMPOSITIONS

91001



91002

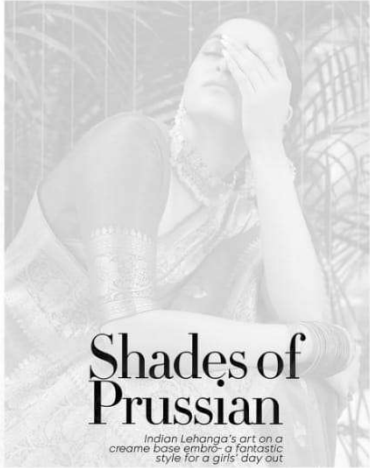
The beauty of a woman is not in a facial mode but the true beauty in a woman is reflected in her soul.....



JOH RIVAAJ



jr
JOH RIVAAJ



Shades of Prussian
Indian Lehanga's art on a cream base embroidering fantastic style for a girls' day out



Euphony
of deep
hues



91005

Beauty awakens the soul to act.
I don't think of all the misery but of the beauty that still remains
Endurance is beauty.
Beauty is in the heart of the beholder.

JOH RIVAAJ



In this sandstone ensemble inspired by Indian paisley

91004



JOH RIVAAJ

**EARTHY
COMPOSITIONS
LOOK LIKE
ADREAM**
The beauty of a woman is not in a facial mode
but the true beauty in a woman is
reflected in her soul.....



JOH RIVAAJ

Beauty awakens the soul to act.
I don't think of all the misery but of the beauty that still remains.
Endurance is beauty.
Beauty is in the heart of the beholder.

91006

The advertisement features two smaller images of the woman in the saree. One is a profile view where she is looking upwards, and the other is a close-up of her face and hands, mirroring the pose in the main image. The brand name 'JOH RIVAAJ' is prominently displayed in the upper left. A quote is centered in the lower right, and a small logo with the number '91006' is at the bottom right.



jr
JOH RIVAAJ

**Be
you**
Accepting the cultures
and traditions with
love and respect.



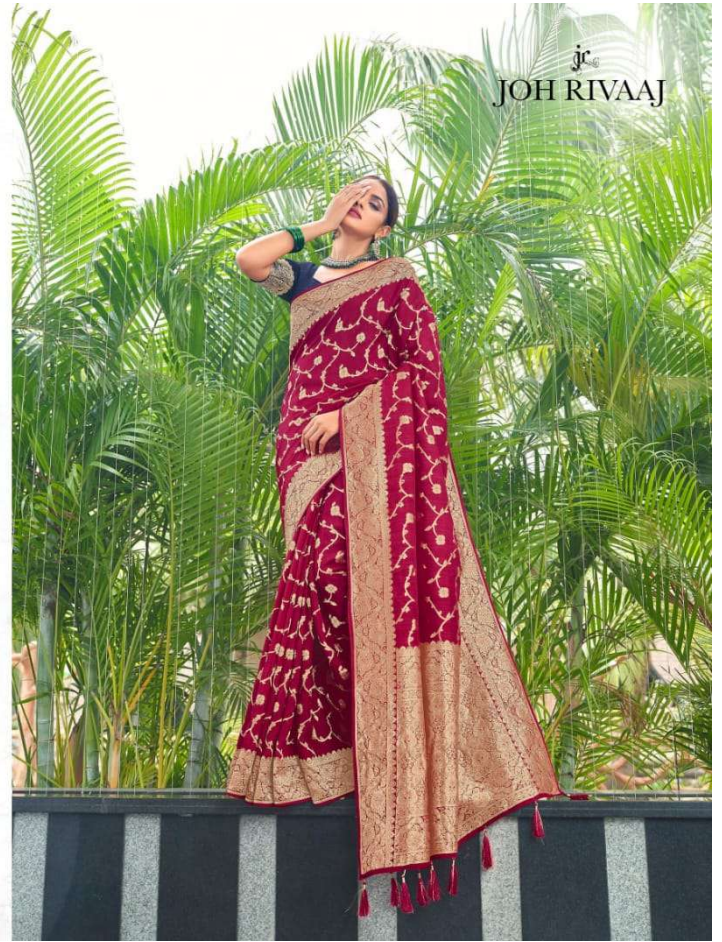


**QUAINT &
HYPNOTIC**

Never-seen-before
that are rendered in
colours of life.



91007







91001



91002



91003



91007



91008



91004



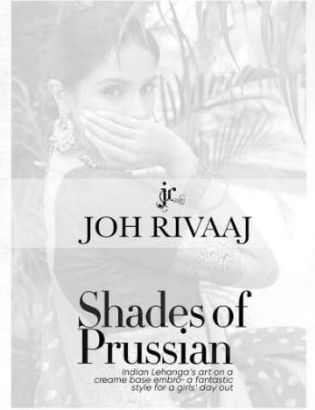
91005



91006



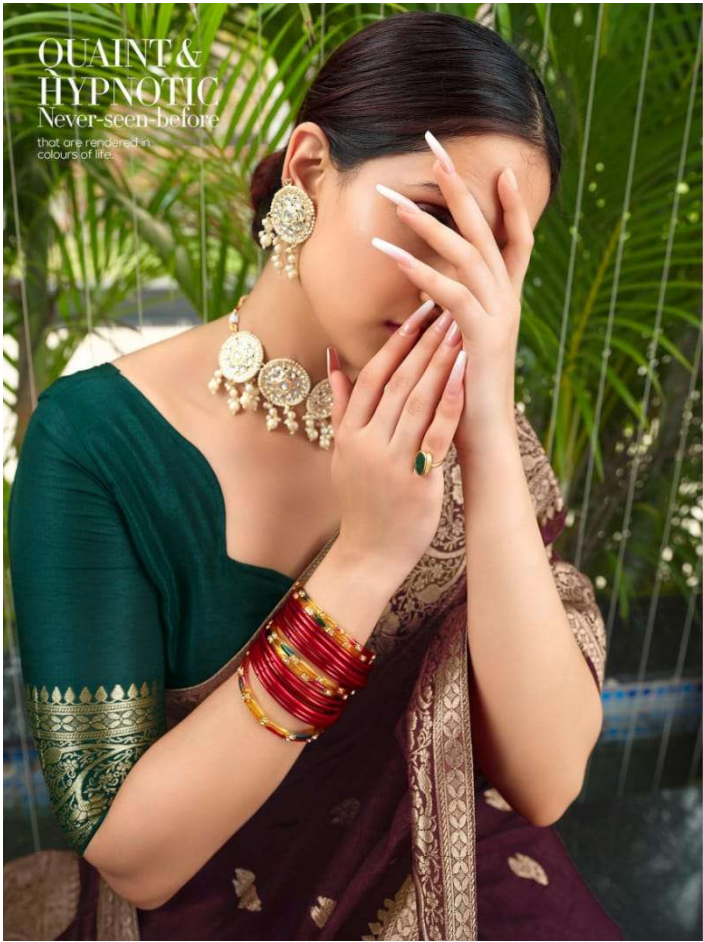
91009



JOH RIVAAJ

Shades of Prussian

Indian Lehanga's art on a cream base embroider a fantastic style for a girls day out



91009

