



JOH RIVAAJ

JANELLE

Vol-910



JOH RIVAAJ

Beauty awakens the soul to act.
I don't think of all the misery but of the beauty that still remains.
Endurance is beauty.
Beauty is in the heart of the beholder.

91006



jr
JOH RIVAAJ

**Be
you**
Accepting the cultures
and traditions with
love and respect.



In this sandstone ensemble inspired by Indian paisley

91004



JOH RIVAAJ

**EARTHY
COMPOSITIONS
LOOK LIKE
ADREAM**
The beauty of a woman is not in a facial mode
but the true beauty in a woman is
reflected in her soul.....



JOH RIVAAJ

JANELLE

Vol-910



91001



91002



91003



91007



91008



91004



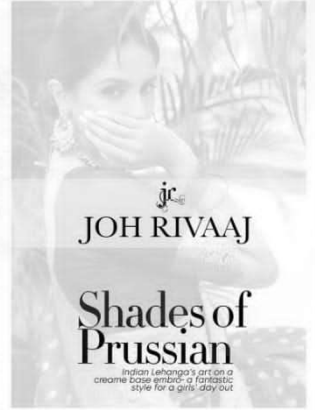
91005



91006



91009



JR
JOH RIVAAJ

Shades of Prussian

Indian Lehanga's art on a
creame base embrod a fantastic
style for a girls day out

Euphony
of deep
hues



91005

Beauty awakens the soul to act.
I don't think of all the misery but of the beauty that still remains.
Endurance is beauty.
Beauty is in the heart of the beholder.

JOH RIVAAJ





91002

The beauty of a woman is not in a facial mode but the true beauty in a woman is reflected in her soul....



jc
JOH RIVAAJ

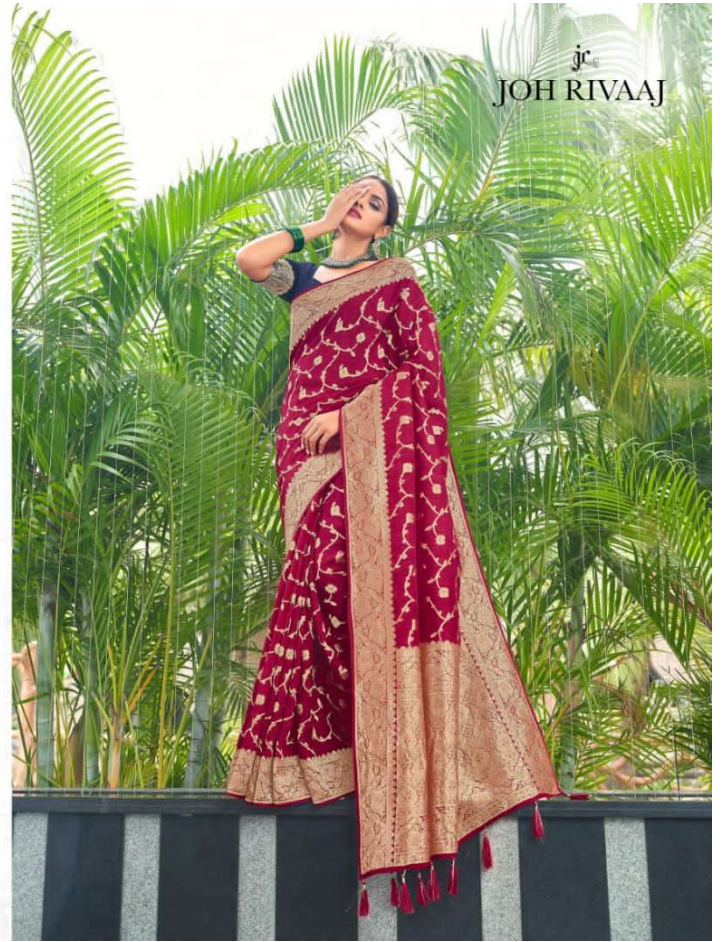


**QUAINT &
HYPNOTIC**

Never-seen-before
that are rendered in
colours of life.

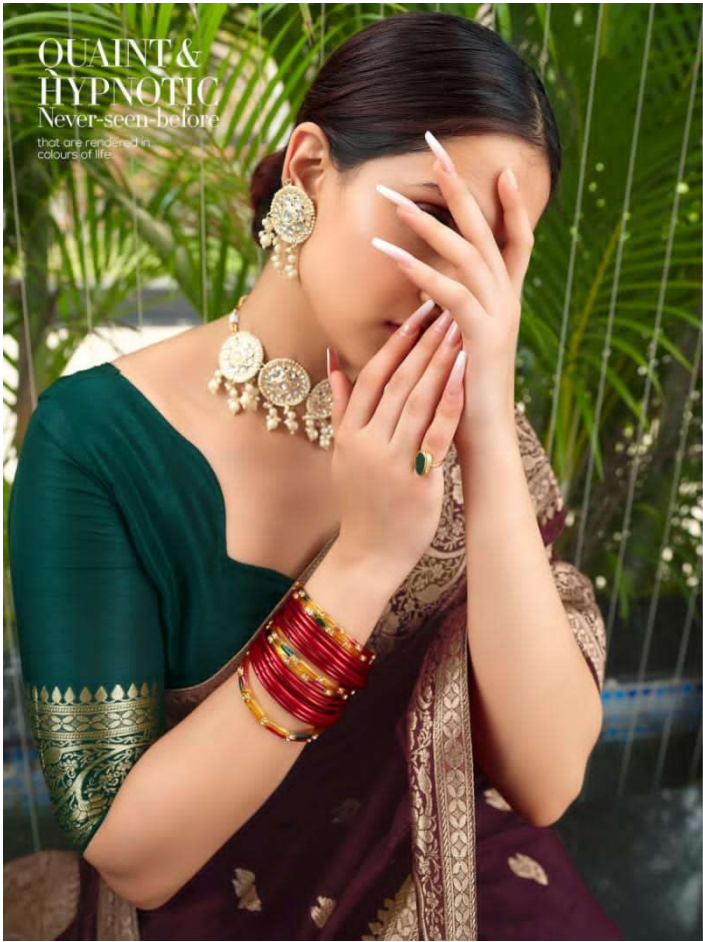


91007









91009





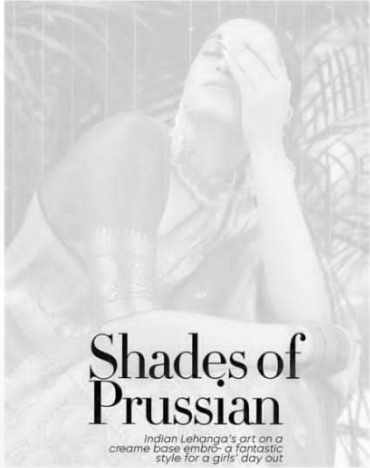
JOH RIVAAJ

Dipped in
ELEGANCE

91001



jr
JOH RIVAAJ



Shades of Prussian
Indian Lehanga's art on a cream base - a fantastic style for a girls' day out

G
L
A
M
O
R
F
I
N
E
T
O
U
C
H

T H E

QUEEN

O F
CULTURE

glimpse of heaven



JOH RIVAAJ

Q
E
N
O
F
C
U
L
T
U
E


JOH RIVAAJ

JANELLE		
SR NO.	<i>D NO.</i>	RATE
1	<i>janelle-91001</i>	1995/-
2	<i>janelle-91002</i>	1995/-
3	<i>janelle-91003</i>	1995/-
4	<i>janelle-91004</i>	1995/-
5	<i>janelle-91005</i>	1995/-
6	<i>janelle-91006</i>	1995/-
7	<i>janelle-91007</i>	1995/-
8	<i>janelle-91008</i>	1995/-
9	<i>janelle-91009</i>	1995/-