

# RAJWADI

VOL-7  
by  
Aaawiya®





# RAJWADI

VOL-7  
by  
Aaawiya®







7036





7036





7037



आaawiya®



7037





आaawiya®



7038







Maawiya®

7038



Aaawiya®



7039





7039





आaawiya®



7040







Maawiya®



7040



आaawiya®



7041







7041





Aaawiya®



7041



आaawiya®

7042



आaawiya®



7042



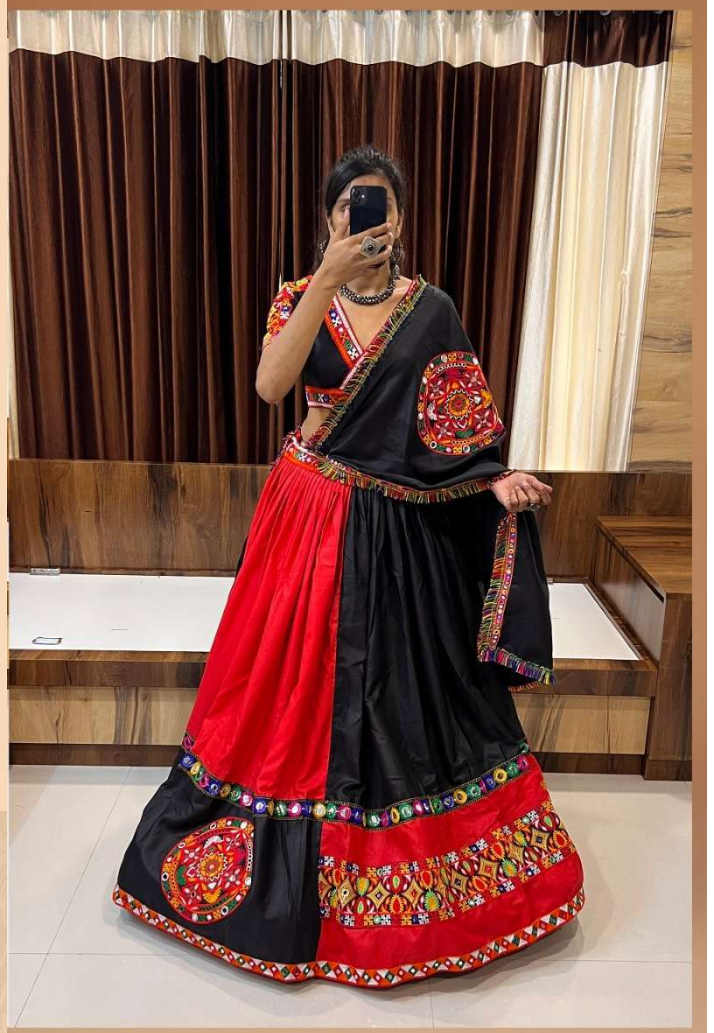


7043



आaawiya®

7043



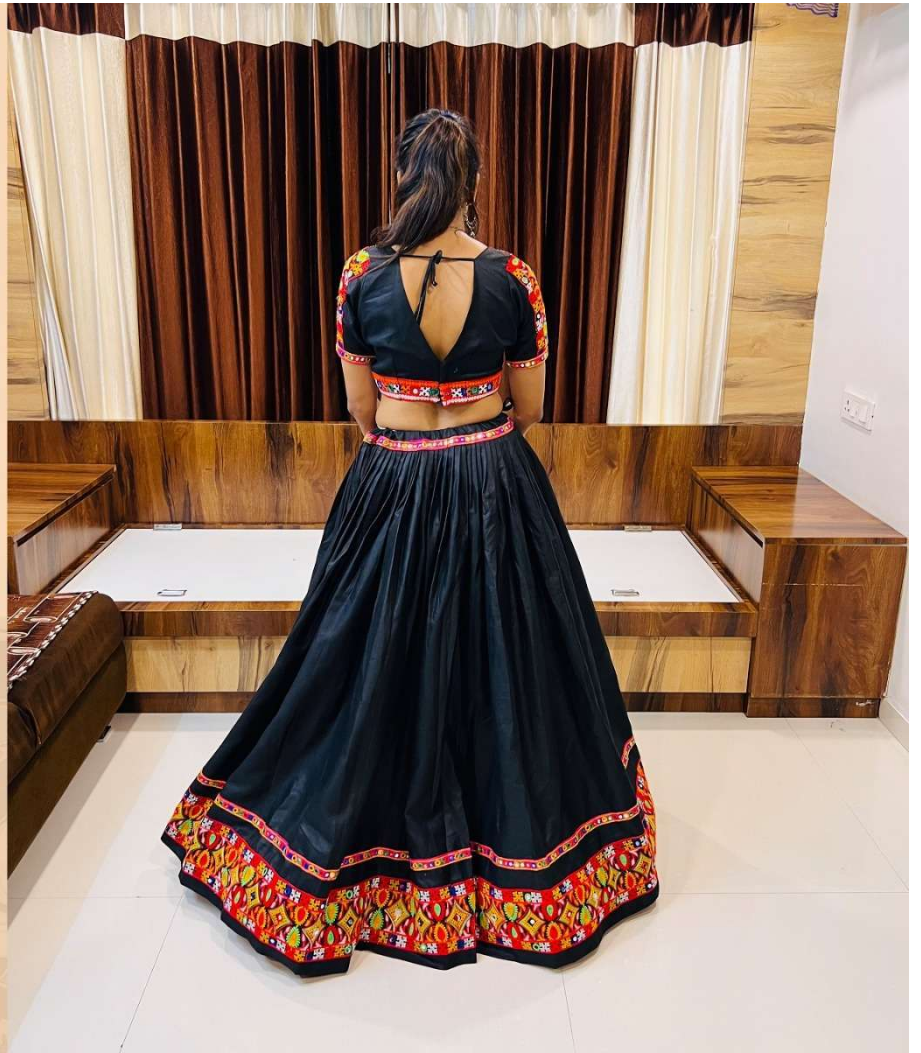




आaawiya®



7044



आaawiya®



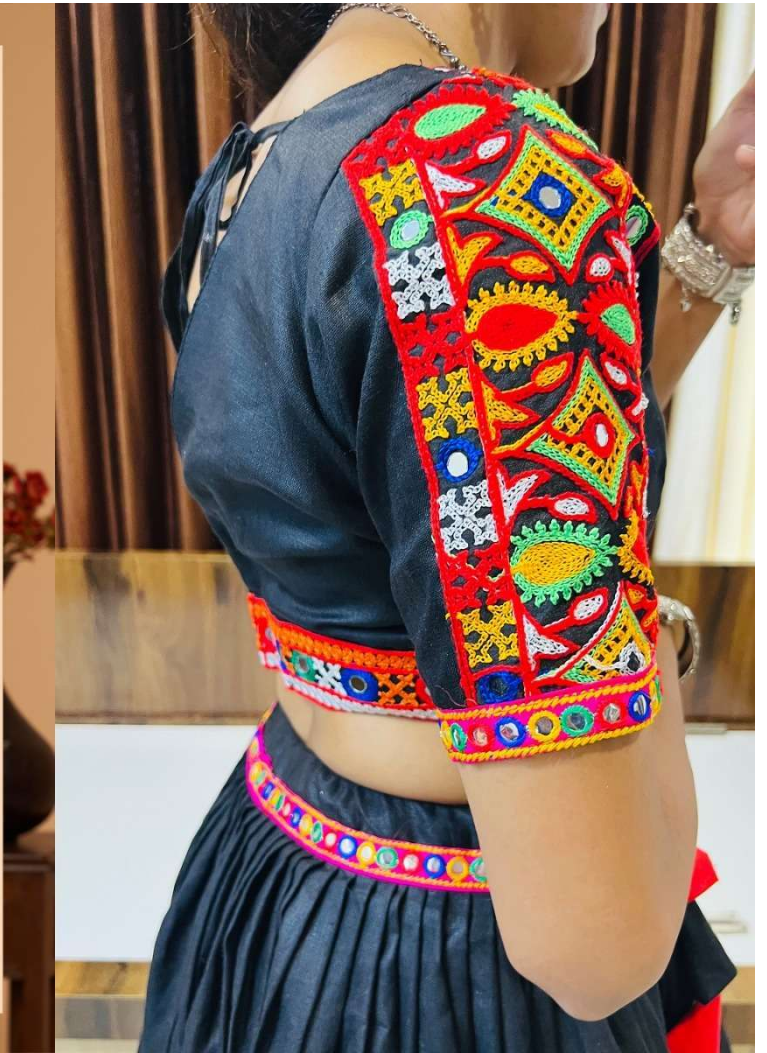
7044







7044







आaawiya®





आaawiya®

7046





7046



7047

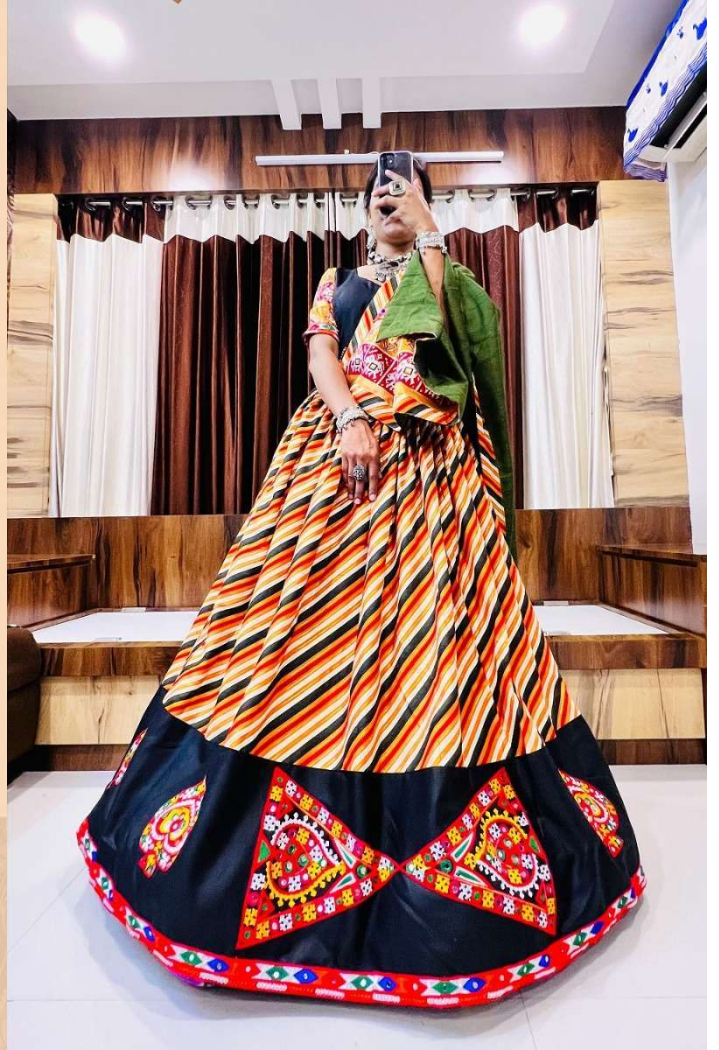


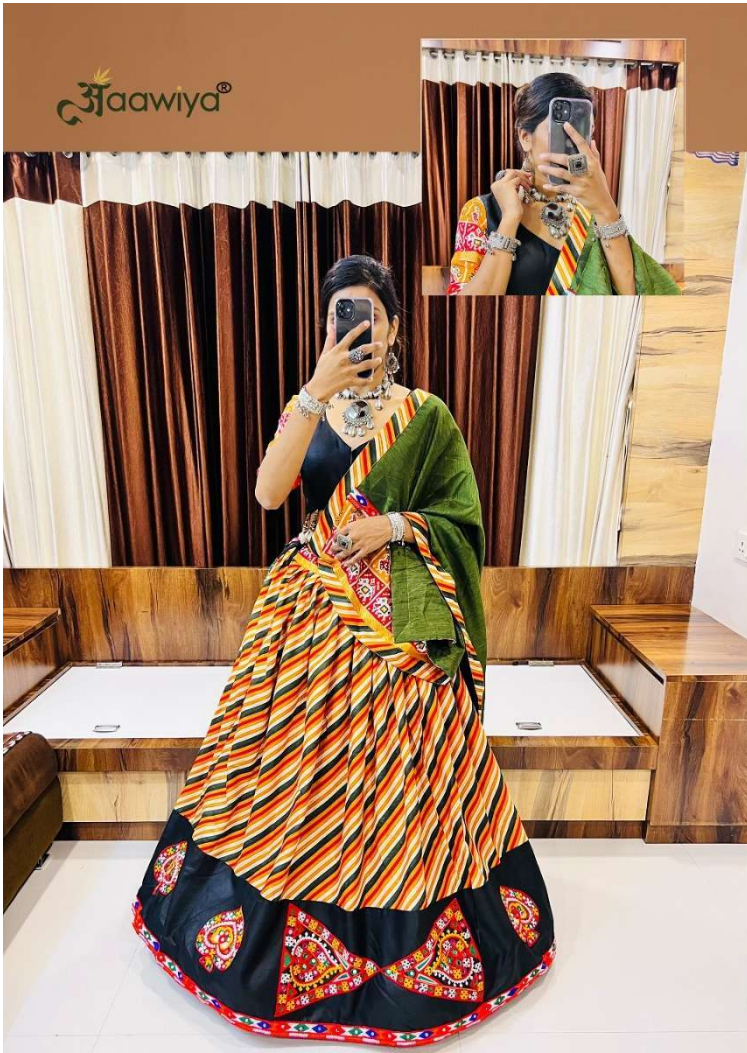


आaawiya®



7047





7047





7048





Aaawiya®



7048



आaawiya®



7048





# RAIWAADI

## VOL - 7



(FULL STICHED)

SKU	MAIN COLOUR	FABRIC	WORK	FLAIR (METER)	SIZE	WEIGHT (K G)	PRICE (GST-12%)
7036	MULTI COLOUR	COTTON	PRINTED, GAMTHI, MIRROR WORK	5.5	LEHENGA WAIST: UP TO "44", LENGTH: "42" CLOSER: DRAWSTRING WITH TASSELS BLOUSE: ("38" STICHED), SLEEVE: "12"	1.400	2350/-
7037	BLACK	COTTON	PRINTED, GAMTHI, GOTAPATTI, MIRROR WORK	4	LEHENGA WAIST: UP TO "44", LENGTH: "42" CLOSER: DRAWSTRING WITH TASSELS BLOUSE: ("38" STICHED), SLEEVE: "12"	1.400	2250/-
7038	CHIKU	COTTON	PRINTED, GAMTHI, MIRROR WORK	4	LEHENGA WAIST: UP TO "44", LENGTH: "42" CLOSER: DRAWSTRING WITH TASSELS BLOUSE: ("38" STICHED), SLEEVE: "12"	1.400	1850/-
7039	MULTI COLOUR	COTTON	PRINTED, GAMTHI, MIRROR WORK	4	LEHENGA WAIST: UP TO "44", LENGTH: "42" CLOSER: DRAWSTRING WITH TASSELS BLOUSE: ("38" STICHED), SLEEVE: "12"	1.400	2250/-
7040	BLACK	COTTON	PRINTED, GAMTHI, LACEWORK, MIRROR WORK	6	LEHENGA WAIST: UP TO "44", LENGTH: "42" CLOSER: DRAWSTRING WITH TASSELS BLOUSE: ("38" STICHED), SLEEVE: "12"	1.400	1850/-
7041	WHITE	COTTON	PRINTED, LACE, GOTAPATTI	6	LEHENGA WAIST: UP TO "44", LENGTH: "42" CLOSER: DRAWSTRING WITH TASSELS BLOUSE: ("38" STICHED), SLEEVE: "12"	1.600	2250/-
7042	PINK & BLACK	COTTON	PRINTED, GAMTHI, LACEWORK, MIRROR WORK	6	LEHENGA WAIST: UP TO "44", LENGTH: "42" CLOSER: DRAWSTRING WITH TASSELS BLOUSE: ("38" STICHED), SLEEVE: "12"	1.500	2250/-
7043	RED & BLACK	COTTON	GAMTHI WORK, MIRROR WORK	6	LEHENGA WAIST: UP TO "44", LENGTH: "42" CLOSER: DRAWSTRING WITH TASSELS BLOUSE: ("38" STICHED), SLEEVE: "12"	1.800	2450/-
7044	BLACK	COTTON	GAMTHI WORK, MIRROR WORK	6.5	LEHENGA WAIST: UP TO "44", LENGTH: "42" CLOSER: DRAWSTRING WITH TASSELS BLOUSE: ("38" STICHED), SLEEVE: "12"	1.800	2450/-
7045	MULTI COLOUR	COTTON	PRINTED, GAMTHI, MIRROR WORK	4	LEHENGA WAIST: UP TO "44", LENGTH: "42" CLOSER: DRAWSTRING WITH TASSELS BLOUSE: ("38" STICHED), SLEEVE: "12"	1.400	1850/-
7046	RED & WHITE	COTTON	PRINTED, LACE, MIRROR WORK	7	LEHENGA WAIST: UP TO "44", LENGTH: "42" CLOSER: DRAWSTRING WITH TASSELS BLOUSE: ("38" STICHED), SLEEVE: "12"	1.400	1950/-
7047	MULTI COLOUR	COTTON	PRINTED, GAMTHI, MIRROR WORK	4	LEHENGA WAIST: UP TO "44", LENGTH: "42" CLOSER: DRAWSTRING WITH TASSELS BLOUSE: ("38" STICHED), SLEEVE: "11"	1.400	1850/-
7048	MULTI COLOUR	COTTON	PRINTED, GAMTHI, MIRROR WORK	4	LEHENGA WAIST: UP TO "44", LENGTH: "42" CLOSER: DRAWSTRING WITH TASSELS BLOUSE: ("38" STICHED), SLEEVE: "12"	1.400	1850/-

**NOTE - LEHENGA CLOSER: DRAWSTRING WITH TASSELS,**  
**NOTE - BLOUSE SIZE: 38" THERE IS MARGIN CUSTOMER CAN ADJUST UP TO 42.**  
**NOTE - DUPATTA LENGTH : 2.5 METER**





7036



7037



7038



7039



7040



7041



7042



7043



7044



7045



7046



7047

# RAIWADI

VOL - 7



7048