

DRESSTIVE®  
*Eleanor*



DRESSTIVE®  
*Eleanor*







DRESSTIVE™

*The showstopper*

Spring blossoms in the light breeze and mid-day sun. The beautiful, bohemian ensemble from our collection is a true showstopper! Featuring a bold floral print on a dainty pastel base.

#DRS6002



DRESSTIVE®

*The showstopper*

Spring blooms in the light of a bright mid-day sun. The beautiful heritage ensemble from our collection is a true showstopper moment featuring foiled floral print on a demure pastel base.

#DRS6002

DRESSTIVE

*The muse*  
Elegance is an ornate homage of  
Aggron and hope weaved  
together through an array of  
colours, textures, and motifs.  
A resplendent line of classic Indian  
silhouettes with a twist, this  
collection is for one bold muse who  
embraces her modern sensibilities.





DRESSTIVE

*The muse*  
Elegance is an innate heritage of  
together through an array of  
colours, textures, and motifs.  
A resplendent line of classic Indian  
silhouettes with a twist, this  
collection is for our bold muse who  
embraces her modern sensibilities.



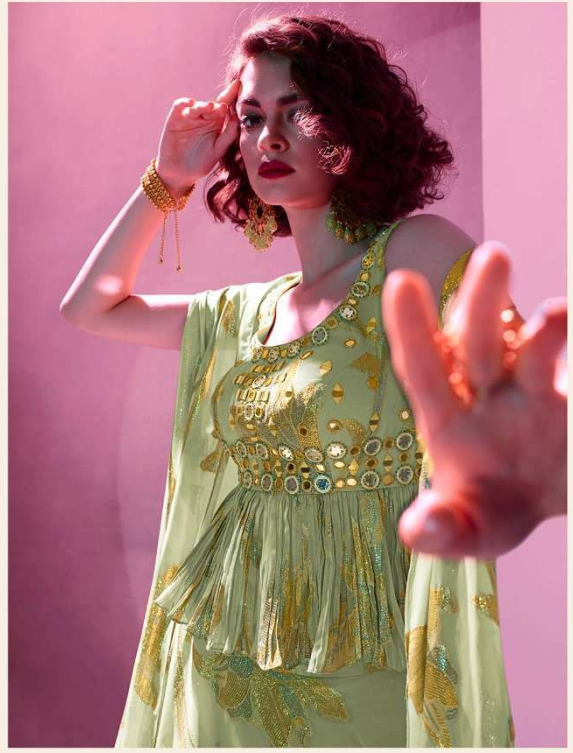


DRESSTIVE®

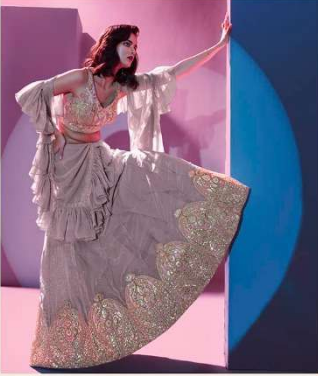
*The green*

The timeless beauty of mirror work creates a glorious green that makes this ensemble a true work of stellar craftsmanship. The subtle glow of gold and silver add pure glamour to any special occasion.

# DRS6003



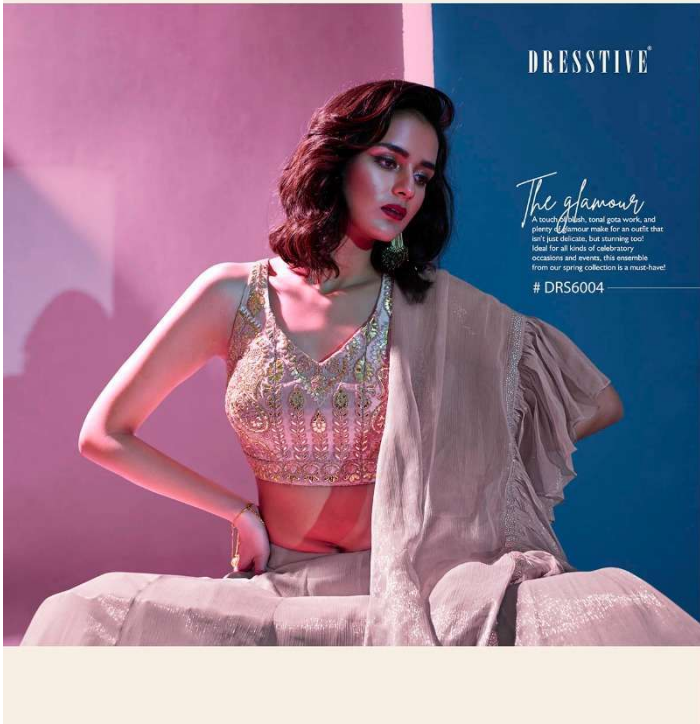




**DRESSTIVE™**

*The glamour*  
A touch of bling, total gosa work, and plenty of glamour make for an outfit that isn't just a dress, but a statement!  
Ideal for all kinds of celebratory occasions and events, this ensemble from our spring collection is a must-have!

#DRS6004





DRESSTIVE®

*The spirit*

The embodiment of free-spirited charm is what this ensemble is all about. Our yellow ensemble, featuring a multi-tiered skirt with exaggerated flare and the new classic glow of all-over floral embroidery, is our ode to spring.

#DRS6005







DRESSTIVE®

*The spirit*  
The embodiment of free-spirited charm is what this ensemble is all about. Our yellow lehenga, featuring a multi-tiered skirt with exaggerated flare and the sun-kissed glow of all-over floral embroidery, is our ode to spring.

#DRS6005





**DRESSTIVE**

*The ocean*  
A sparkle of ocean, the azure ensemble showcases a multi-tiered skirt with an elongated flare to create a beautifully feminine silhouette. Sprinkled with mirrors, this elegant set exudes style that every occasion demands.

#DRS6006

DRESSTIVE



*The assure*  
Her assure is her confidence,  
her beauty is her strength.  
Breathe life & fresh air in our  
multi-layered lehngas and fitted  
dupattas - a true ode to the  
season of Spring.

# DRS6007



DRESSTIVE®

*The allure*

Her allure is her confidence,  
her beauty is her strength.  
It radiates like a fire set in our  
multi-tiered lehenga and filled  
dupatta - is your call to the  
season of Spring.

# DRS6007







DRESSTIVE®

*The radiance*  
All things pink. All things pretty -  
bringing out the femininity in  
celebratory occasions. Get radiated  
by the play of springtime  
flowers and their nature  
every time you adorn this lehenga.

#DRS6008





DRESSTIVE®

*The springtime*  
Dance in the low sun of springtime  
in these pastel lehengas featuring  
shades of summer and dainty  
embroidery details that  
sparkle and glow with every step.

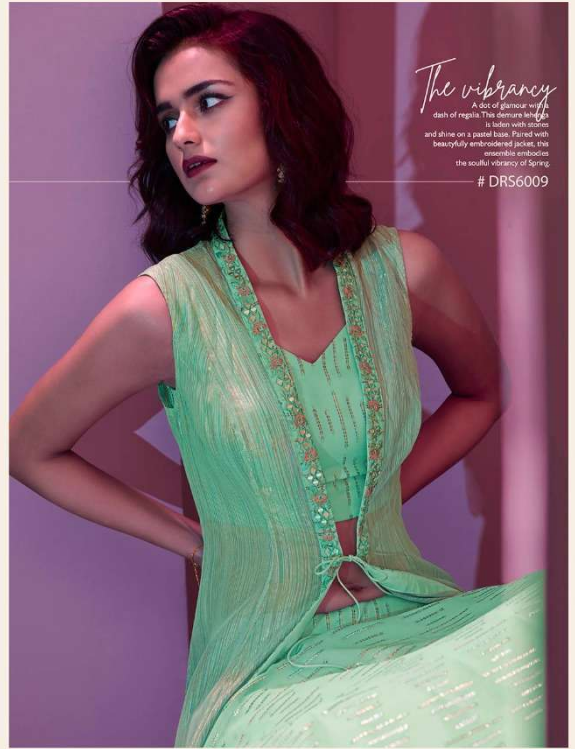


DRESSTIVE®

*The vibrancy*

A dot of glamour with a dash of regalia. This demure design is laden with colors and shine on a pastel base. Paired with beautifully embroidered pieces, the ensemble embodies the soulful vibrancy of Spring.

#DRS6009





DRESSTIVE®

*The vibrancy*

A dose of glamour with a dash of regalia. This demure lady is laden with zircones and sits on a gauzy base. Paired with beautifully embroidered jacket, this ensemble embodies the soulful vibrancy of Spring.

# DRS6009







DRESSTIVE®

*The trend*  
A delicate expression of all things fresh, our pastel palette is sprinkled with floral embroidery. This ensemble personifies elegance with fitted details and embroidered belt - a trend that is our signature.

#DRS6010

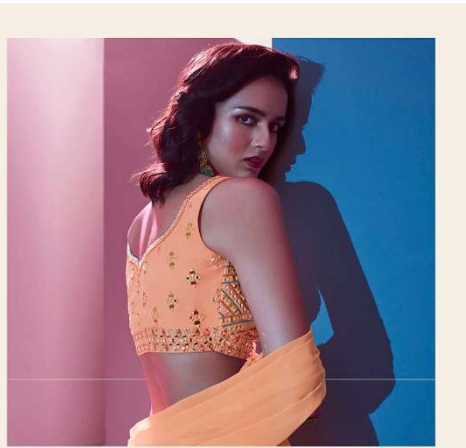






DRESSTIVE®

*The blossom*  
Celebrating hand-drawn blossoms and soft swishes, this pink-leaved lehenga, paired with multi-coloured risham and mirror work blouse makes for an ensemble that is an ode to springtime.  
# DRS6011







**DRESSTIVE™**

*The blossom*  
Celebrating the arrival of blossom, our look features this pink-toned lehenga paired with multi-coloured resham and mirror work blouse, making for an ensemble that is an ode to springtime.

#DRS6011



DRESSTIVE®

*The fairytale*  
With a focus on the shades  
of summer, light between  
drama and fairytale, every ensemble  
from DressTive's new collection is  
a sight to behold. Presenting Eleanor  
the essence of celebration, a  
symbol of all things fresh and pure.

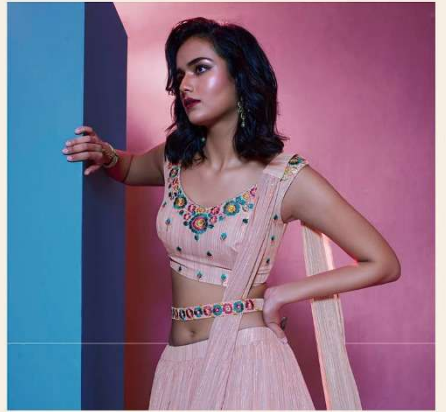


DRESSTIVE®

*The shimmer*

Subtle and soft, our pastel lehenga pays homage to new beginnings and the freshness of spring. Featuring real-hair embroidery, the innocent ensemble shimmers with every step.

# DRS6001







# DRS6001



# DRS6002



# DRS6003



# DRS6007



# DRS6008



# DRS6009

# DRS6004



# DRS6005



# DRS6006



# DRS6010



# DRS6011



DRESSTIVE  
*Eleanor*



# DRESSTIVE<sup>®</sup> ELEANOR



SKU	MAIN COLOUR	BLOUSE FABRIC	LEHENGA FABRIC	DUPATTA FABRIC	SIZE	WORK	PRICE
DRS6001	PURPLE	ART SILK	ART SILK	ART SILK	SEMI STITCHED(FREE SIZE)	THREAD WORK	2275/- +12%GST+SHIPPING
DRS6002	AQUA	JACQUARD	JACQUARD	JACQUARD	SEMI STITCHED(FREE SIZE)	DIGITAL PRINT & HAND WORK	2560/- +12%GST+SHIPPING
DRS6003	GREEN	JACQUARD	JACQUARD	JACQUARD	SEMI STITCHED(FREE SIZE)	DIGITAL PRINT & HAND WORK	2560/- +12%GST+SHIPPING
DRS6004	TAUPE	ART SILK	ART SILK	ART SILK	SEMI STITCHED(FREE SIZE)	THREAD WORK	3295/- +12%GST+SHIPPING
DRS6005	YELLOW	GEORGETTE	GEORGETTE	GEORGETTE	SEMI STITCHED(FREE SIZE)	THREAD & HAND WORK	2670/- +12%GST+SHIPPING
DRS6006	GREY	ART SILK	ART SILK	ART SILK	SEMI STITCHED(FREE SIZE)	THREAD & HAND WORK	2500/- +12%GST+SHIPPING
DRS6007	OFF WHITE	ART SILK	ART SILK	ART SILK	SEMI STITCHED(FREE SIZE)	SEQUENCE	2390/- +12%GST+SHIPPING
DRS6008	ORANGE	ART SILK	ART SILK	ART SILK	SEMI STITCHED(FREE SIZE)	SEQUENCE & THREAD WORK	2615/- +12%GST+SHIPPING
DRS6009	AQUA	ART SILK	ART SILK	ART SILK	SEMI STITCHED(FREE SIZE)	SEQUENCE & THREAD WORK	2615/- +12%GST+SHIPPING
DRS6010	CREAM	GEORGETTE	GEORGETTE	GEORGETTE	SEMI STITCHED(FREE SIZE)	THREAD & HAND WORK	2560/- +12%GST+SHIPPING
DRS6011	ORANGE	GEORGETTE	GEORGETTE	GEORGETTE	SEMI STITCHED(FREE SIZE)	THREAD & HAND WORK	2275/- +12%GST+SHIPPING
TOTAL DESIGN:11 PCS			AVERAGE PRICE:2574/-			TOTAL AMOUNT : 28315/-	