

# ALEENA

VOL-1

आाawiya®





# ALEENA

VOL-1

आाawiyd®





GO

FORTH & BE FABULOUS!

2112

Aaawiyaa®





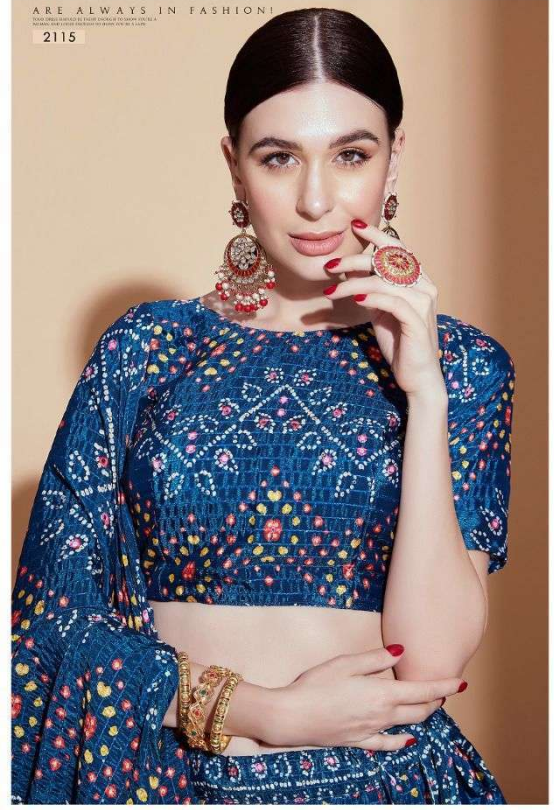
आaawiyā®



SMILES

ARE ALWAYS IN FASHION!

2115





Aaawiya®



CLASSIC

NEVER GOES OUT OF STYLE

2111



आaawiya®



CLASSIC

NEVER GOES OUT OF STYLE

© 2011 AAWIYA. ALL RIGHTS RESERVED. AAWIYA IS A REGISTERED TRADEMARK OF AAWIYA. AAWIYA IS A REGISTERED TRADEMARK OF AAWIYA. AAWIYA IS A REGISTERED TRADEMARK OF AAWIYA.

2111



Aaawiya®



BE

YOUR OWN LABEL

2113









Aaawiya®

BE

YOUR OWN LABEL

2113





Aaawiya®



YOU

SHOULD ALWAYS FEEL PRETTY

2114



आaawiya®

YOU

SHOULD ALWAYS  
FEEL PRETTY  
2114



आाawiya®



2111



2112



2113



2114



2115

ALEENA  
VOL-1

आाawiya®





SMILES

ARE ALWAYS IN FASHION!

2115



WEIGHT - 1.5 KG

SKU	MAIN COLOR	LEHENGA FABRIC	BLOUSE FABRIC	DUPATTA FABRIC	DESCRIPTION
2111	PARPAL	CHINON CROCHET	CHINON CROCHET	CHINON CROCHET	DIGITAL PRINT & CORCHET WORK
2112	PEACH	CHINON CROCHET	CHINON CROCHET	CHINON CROCHET	DIGITAL PRINT & CORCHET WORK
2113	BLUE	CHINON CROCHET	CHINON CROCHET	CHINON CROCHET	DIGITAL PRINT & CORCHET WORK
2114	BLUE	CHINON CROCHET	CHINON CROCHET	CHINON CROCHET	DIGITAL PRINT & CORCHET WORK
2115	BLUE	CHINON CROCHET	CHINON CROCHET	CHINON CROCHET	DIGITAL PRINT & CORCHET WORK

- 1) LEHENGA & BLOUSE WORK:- DIGITAL PRINT & CORCHET
- 2) DUPATAA WORK:- DIGITAL PRINT & CORCHET WITH TASSELS
- 3) LEHENGA SEMI-STICH WITH ART SILK INNER & CAN-CAN WITH CANVAS
- 4) LEHENGA LENGTH 42" & WAIST 44"
- 5) LEHENGA FLAIR - 4 MTR & BLOUSE 1. MTR & DUPATTA LENGTH 2.3 MTR