

bhkala



4856





4851



4852



4855



4856




4853



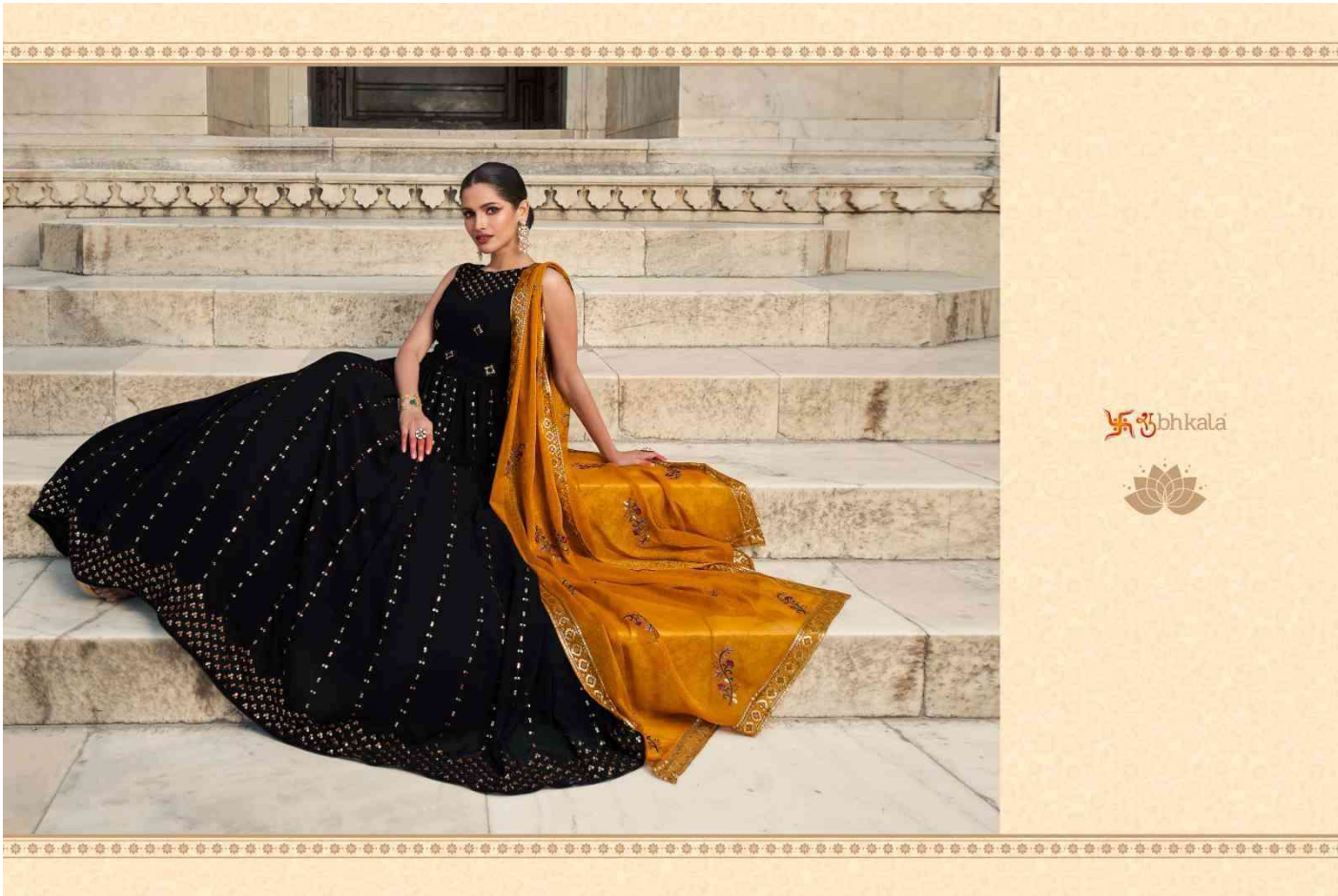
4854



4857

  
**FLORY**  
 VOL-29





Swastika bhkala





Ubhkala

# FLORY

VOL - 29





शुभकला



4851







Swabhkala

4852



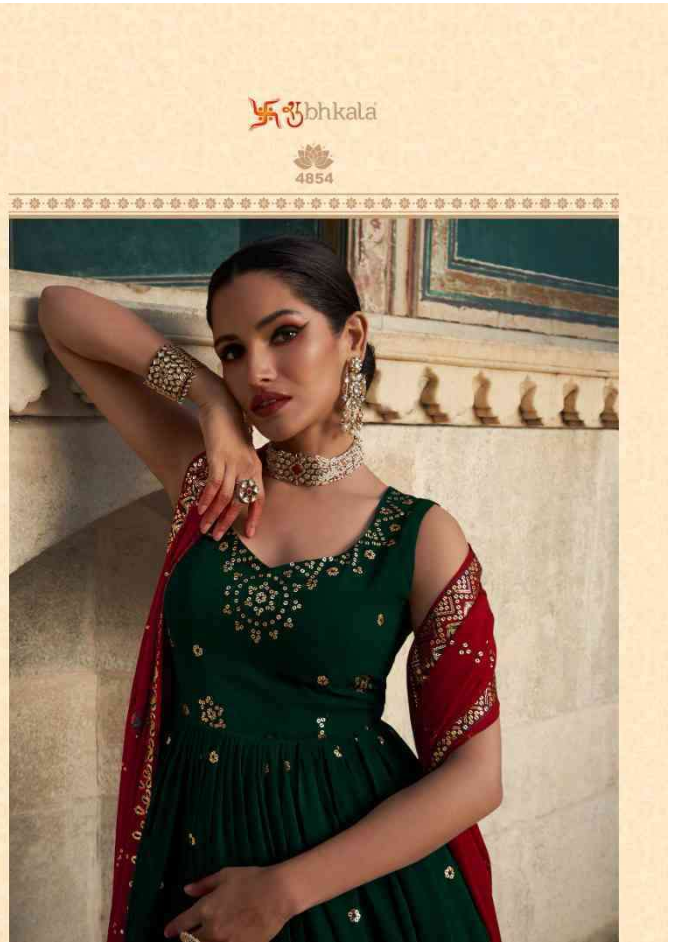




Shikha  
4853

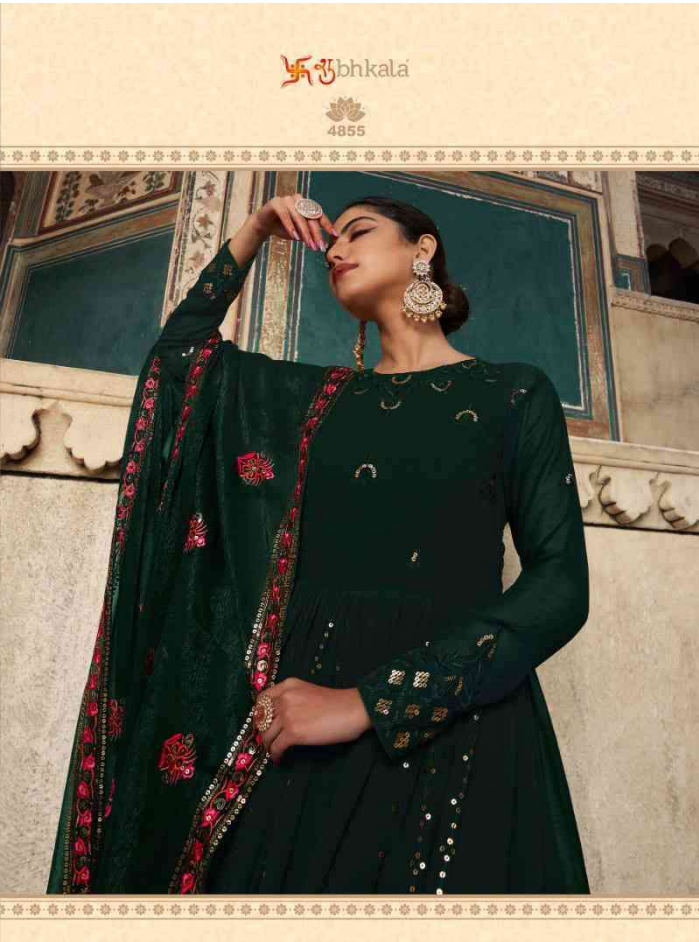
















Swabhkala

4856



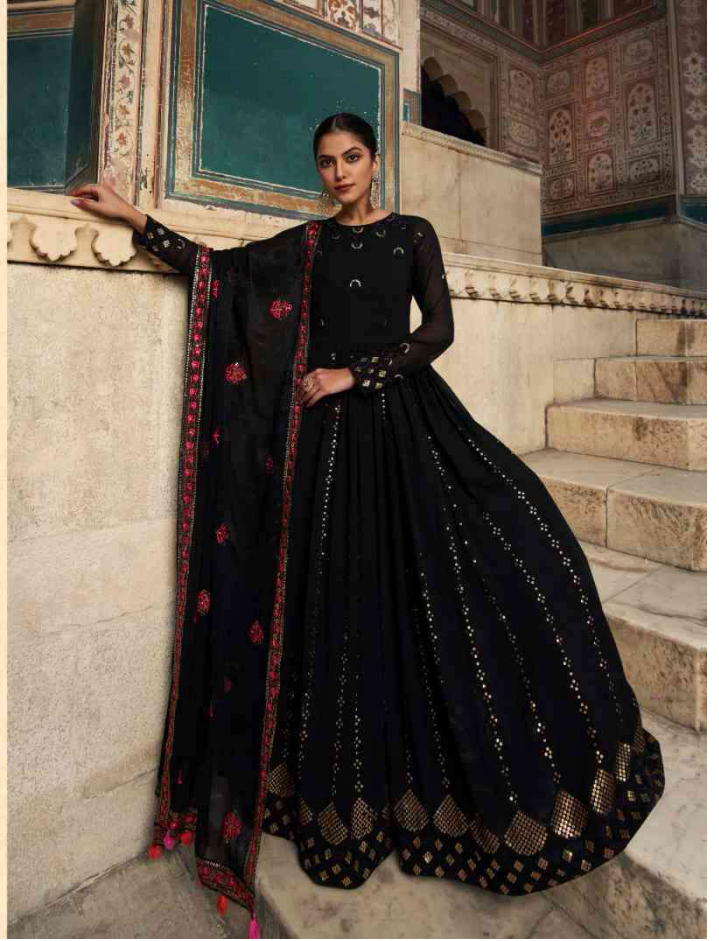




शुभकला



4857

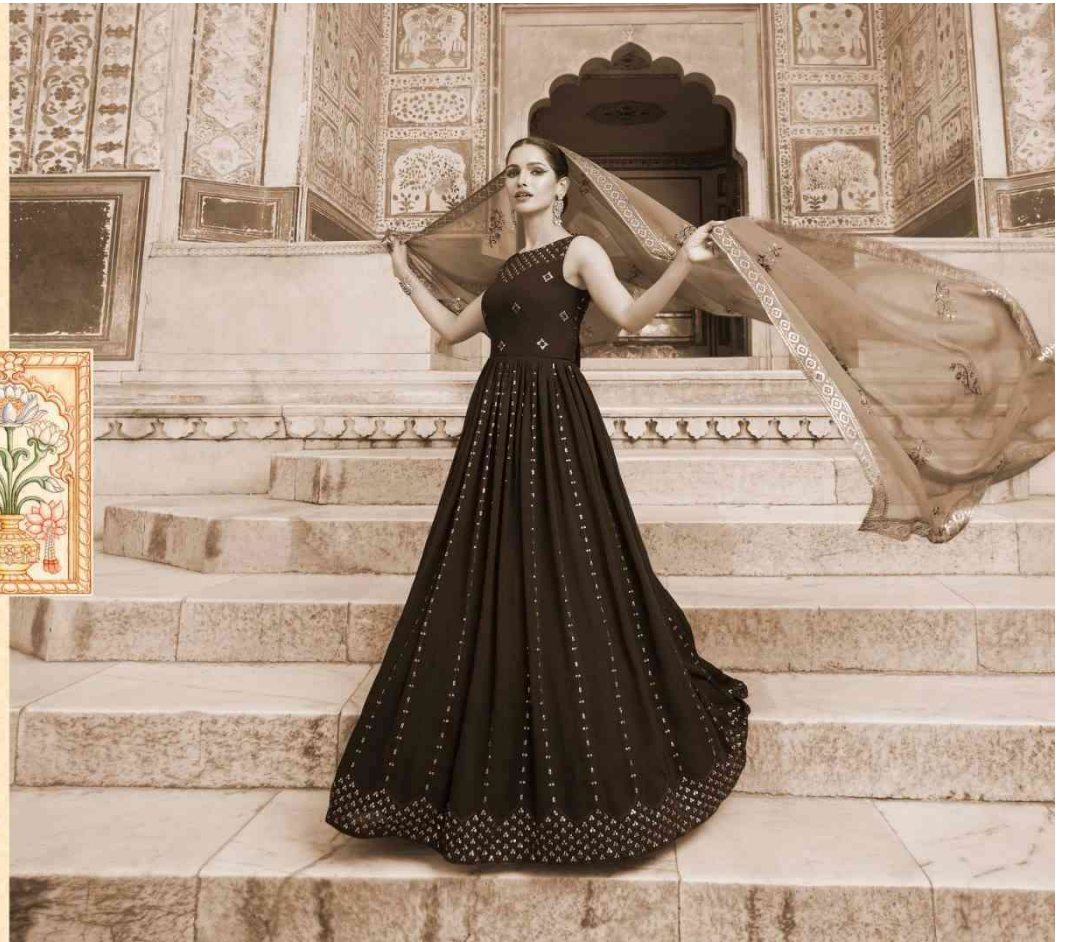


Swabhkala

4857



शुभकला





Design NO. (SKU)	Gown & Inner Color	Dupatta Color	Gown Fabric	Dupatta Fabric	Inner Fabric	Gown & Dupatta Work	SIZE (SEMI - STITCHED)	Top Length INCH	Inner Length MTR	Dupatta Length
<b>4851</b>	Purple	Mustard Yellow	Georgette	Shimmer	Silk Crepe	Thread And Sequince Embroidered Work	Semi Stitched (Customized from 34 to 46)	58	3	2.30 MTR
<b>4852</b>	Black	Mustard Yellow	Georgette	Shimmer	Silk Crepe	Thread And Sequince Embroidered Work	Semi Stitched (Customized from 34 to 46)	58	3	2.30 MTR
<b>4853</b>	Navy Blue	Maroon	Georgette	Georgette	Silk Crepe	Thread And Sequince Embroidered Work	Semi Stitched (Customized from 34 to 46)	58	3	2.30 MTR
<b>4854</b>	Green	Maroon	Georgette	Georgette	Silk Crepe	Thread And Sequince Embroidered Work	Semi Stitched (Customized from 34 to 46)	58	3	2.30 MTR
<b>4855</b>	Green	Green	Georgette	Shimmer	Silk Crepe	Thread And Sequince Embroidered Work	Semi Stitched (Customized from 34 to 46)	58	3	2.30 MTR
<b>4856</b>	Purple	Purple	Georgette	Shimmer	Silk Crepe	Thread And Sequince Embroidered Work	Semi Stitched (Customized from 34 to 46)	58	3	2.30 MTR
<b>4857</b>	Black	Black	Georgette	Shimmer	Silk Crepe	Thread And Sequince Embroidered Work	Semi Stitched (Customized from 34 to 46)	58	3	2.30 MTR

**CAN-CAN NOT AVAILABLE. • FULL STITCHING AVAILABLE.**

**GOWN WEIGHT: 1 KG**

THIS BOOK / CATALOGUE / LOGO / ARE PROTECTED UNDER COPYRIGHT ACT.  
AN ILLEGAL/UNAUTHORIZED REPRINT, PUBLISHING, REPRODUCTION, DISTRIBUTION AND MODIFICATION OF ANY IMAGES, PHOTOGRAPHS AND PRODUCTCS, TOTALLY OR IN PART, FOR ANY PURPOSE, REASON OR CAUSE IS STRICTLY PROHIBITED AND PUNISHABLE UNDER LAW.

bhkala



4856

