

A woman with dark hair pulled back, wearing a white long-sleeved kurta with intricate floral embroidery in red, green, and gold. She is standing in front of a stone archway with carved pillars. The background is a warm, brownish-gold color.

psyna®

Platinum

Vol 05

psyna®



Platinum
5001



psyna®



Platinum
5003







psyna



Platinum





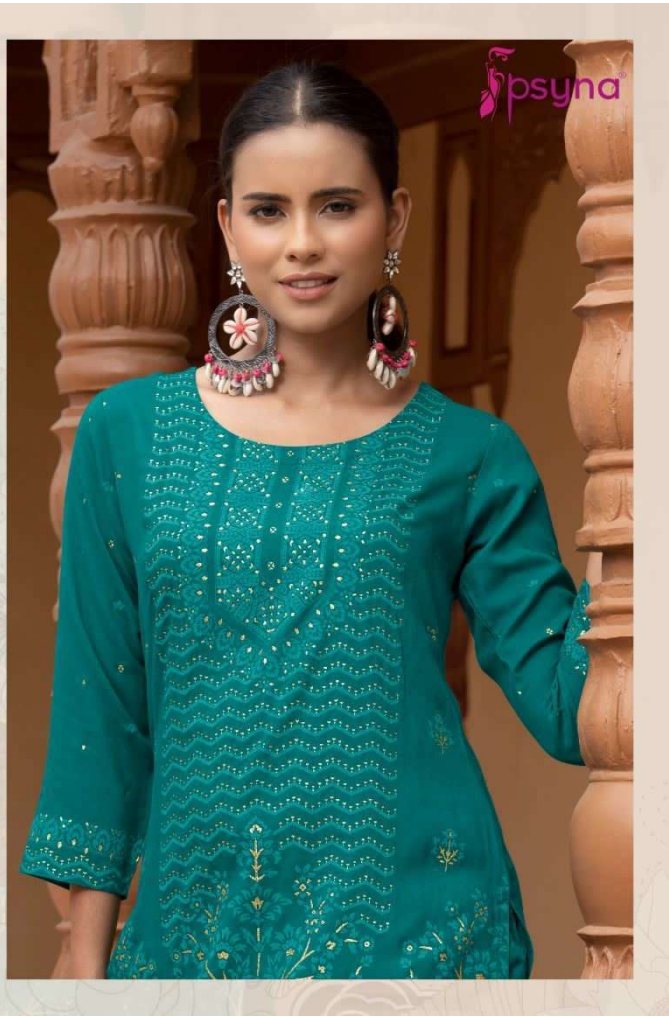
psyna®




Platinum
5006







psyna®

Platinum



5001



5002



5003



5004



5005



5006



5007



5008



psyna®

Platinum

Vol 05

psyna®



Platinum



5005



psyna®



Platinum
5002

