

Ubbhala





bhkala

*With its richly embroidered bodice and tulle, this gorgeous gown is a perfect balance of feminine elegance.*

4811



Ubhkala



Shikha

We have embraced the colors of nature in our  
latest this spring. Of gentle aqua, serene in a "mint" like eye and a perfect  
drapes for the summer weddings.

4817





 bhkala

*Embrace the 'less is more' philosophy and fall in love with this lighter - than - air ensemble drawn from the collection Effortless.*



4813





शुभकला

*When you wish to see an altar,  
that is momentally get dressy,  
nothing comes  
close to a real as perfect shade.*

4814





श्रीbhkala



*An eye has an eye, all are watching  
Lips are silent, and smiling by a dark or blue flower is a new fire hand flower.*

4814

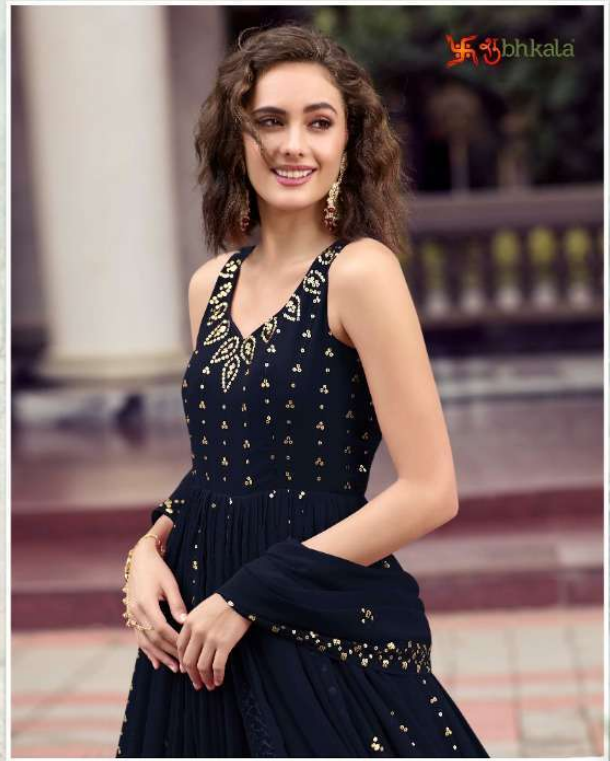


*With its richly embroidered bodice and tulle, this gorgeous gown is a perfect balance of feminine elegance.*

4815







*With its richly embroidered border and facets, this gorgeous gown surely perfectly enhances the feminine silhouette.*

4817









# FLORY

VOL-26

Design NO. (SKU)	Gown & Inner Color	Dupatta Color	Gown Fabric	Dupatta Fabric	Inner Fabric	Gown & Dupatta Work	SIZE (SEMI - STITCHED)	Top Length INCH	Inner Length MTR	Dupatta Length
<b>4811</b>	Green	Green	Georgette	Georgette	Silk Crepe	Thread And Sequince Embroidered Work	Semi Stitched (Customized from 34 to 46)	58	3	2.30 MTR
<b>4812</b>	Rama	Rama	Georgette	Georgette	Silk Crepe	Thread And Sequince Embroidered Work	Semi Stitched (Customized from 34 to 46)	58	3	2.30 MTR
<b>4813</b>	Black	Black	Georgette	Georgette	Silk Crepe	Thread And Sequince Embroidered Work	Semi Stitched (Customized from 34 to 46)	58	3	2.30 MTR
<b>4814</b>	Rani	Rani	Georgette	Georgette	Silk Crepe	Thread And Sequince Embroidered Work	Semi Stitched (Customized from 34 to 46)	58	3	2.30 MTR
<b>4815</b>	Purple	Purple	Georgette	Georgette	Silk Crepe	Thread And Sequince Embroidered Work	Semi Stitched (Customized from 34 to 46)	58	3	2.30 MTR
<b>4816</b>	Maroon	Maroon	Georgette	Georgette	Silk Crepe	Thread And Sequince Embroidered Work	Semi Stitched (Customized from 34 to 46)	58	3	2.30 MTR
<b>4817</b>	Dark Blue	Dark Blue	Georgette	Georgette	Silk Crepe	Thread And Sequince Embroidered Work	Semi Stitched (Customized from 34 to 46)	58	3	2.30 MTR

**CAN-CAN NOT AVAILABLE. • FULL STITCHING AVAILABLE.**

**GOWN WEIGHT: 1 KG**

THIS BOOK / CATALOGUE / LOGO / ARE PROTECTED UNDER COPYRIGHT ACT.

AN ILLEGAL/UNAUTHORIZED REPRINT, PUBLISHING, REPRODUCTION, DISTRIBUTION AND MODIFICATION OF ANY IMAGES, PHOTOGRAPHS AND PRODUCTCS, TOTALLY OR IN PART, FOR ANY PURPOSE, REASON OR CAUSE IS STRICTLY PROHIBITED AND PUNISHABLE UNDER LAW.



4811



4812



4815



4816



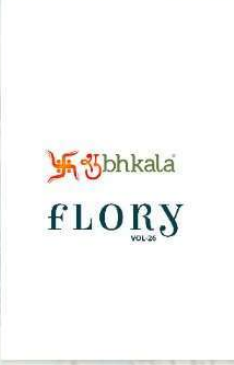
4813



4814

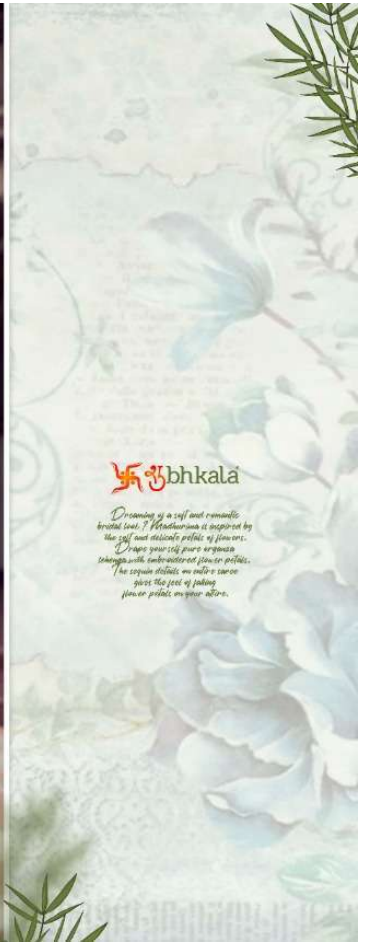


4817



 bhkala  
**FLORY**  
VOL. 26





**Ubhkala**

*Dreaming of a soft and romantic  
brutal love? Meditation is inspired by  
the soft and delicate petals of flowers.  
Drape your big pure aroma  
strength with tenderness of flower petals.  
The square details, we into a caron  
give the feet of picking  
flower prints on your skin.*



शुभकला

*With its richly embroidered border and tassels, this gorgeous gown is perfectly enhanced by feminine silhouettes.*

4811