

A woman with dark hair styled in a bun is shown in profile, looking down. She is wearing an orange Kanvi saree with a dark floral pattern. Her accessories include large silver earrings, a wide silver bracelet, and a ring. The background is a lush green outdoor setting with palm trees.

kash

Kanvi

A woman with dark hair styled in a bun is shown in profile, looking down. She is wearing an orange Kanvi saree with a dark floral pattern. Her accessories include large, ornate silver earrings, a wide silver bangle on her right wrist, and a ring on her right hand. The background is a blurred outdoor setting with greenery and palm trees.

kash

Kanvi



THE BEST CREATES. THE REST FOLLOWS
2751





FASHION DESIGN GIVES YOU AN OPPORTUNITY
TO EXPRESS HOW YOU FEEL

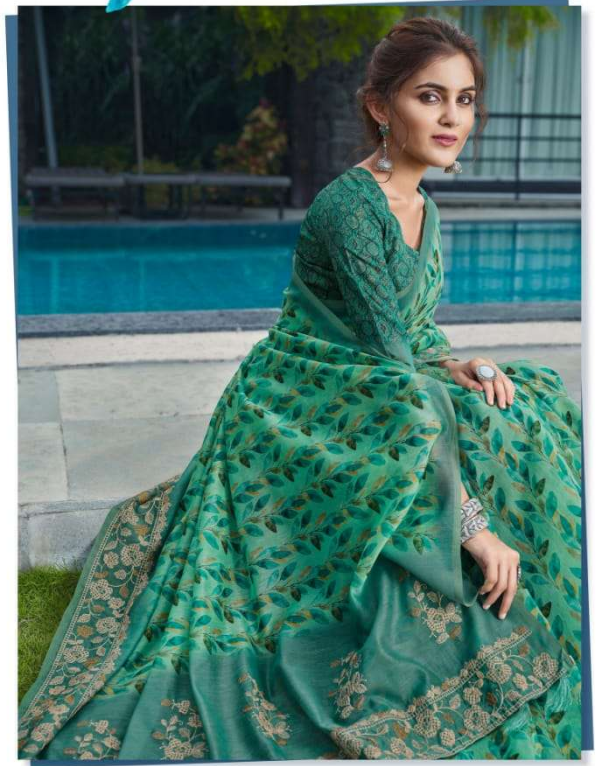
2753





2753

kash





2752





HER
CURVES
AND
CONTOURS
WELL
DEFINED

2755





IN A BEAUTIFUL SAREE A GIRL IS LOFTY

2754



kash

WOVEN WITH HANDS FOR DREAMS TO TREAD



kash



2757



kash

2756





DRAPED IN LAYERS, THAT GENTLY HOLD
2759



kash



2758



2751



2752



2753



2754



2755



2756

kash



2757



2758



2759