



**MEHAK**  
SAREES



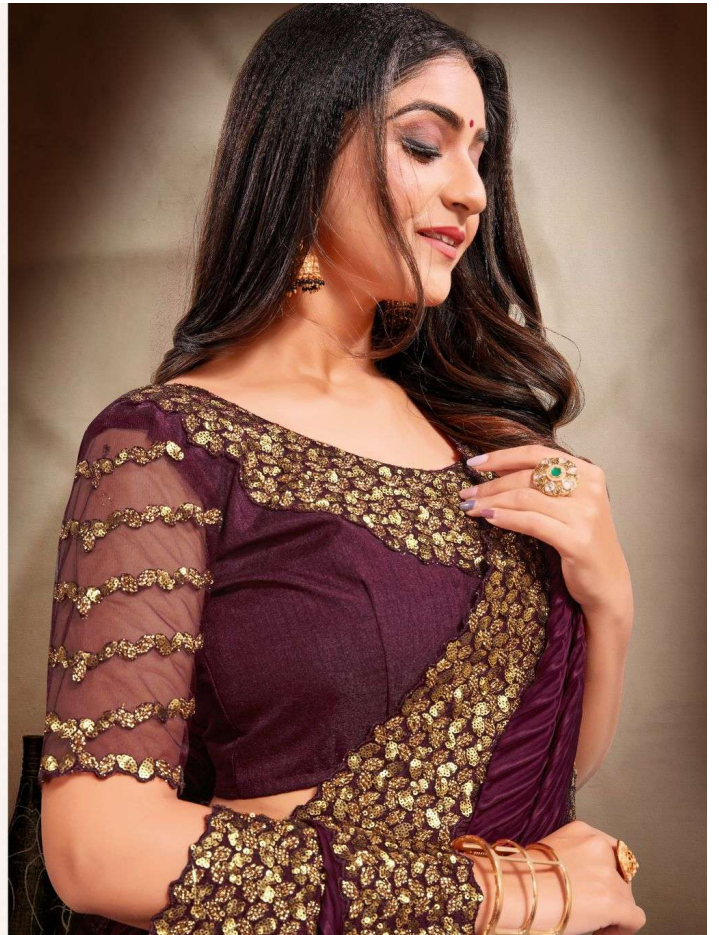
*Satranqi*





*Fashion*  
is your  
passion...  
colors of same-yes, but  
same gives different look-to electro

354 A







D.No.361-F







D.No.361-C



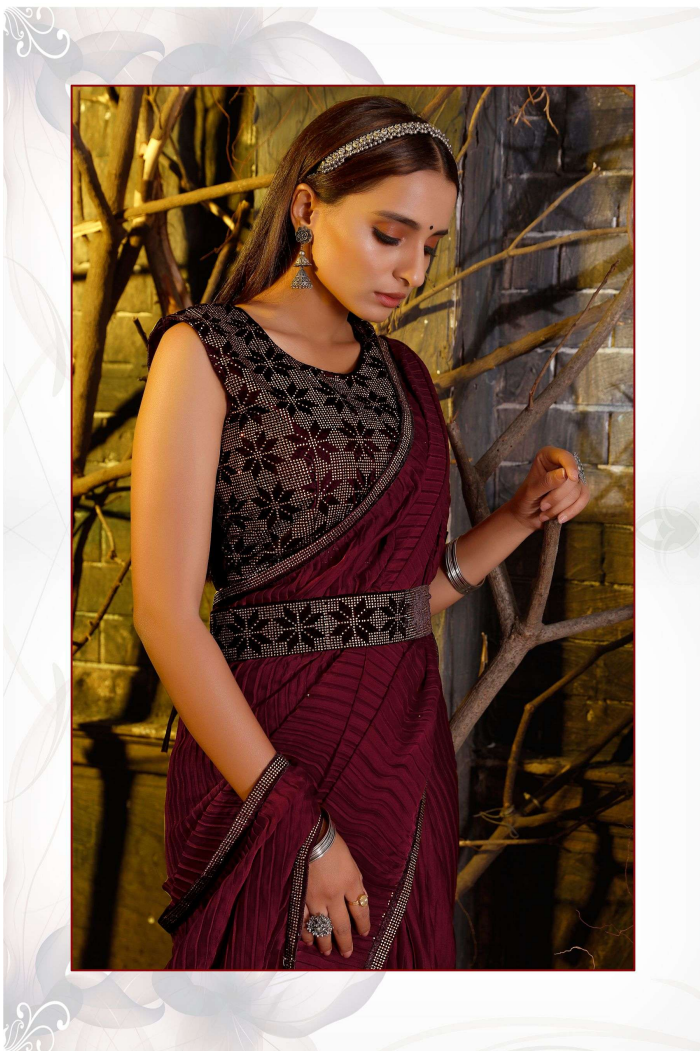


## Catalogue Name

### Satarangi

<u>Design no.</u>	<u>Fabric</u>	<u>Blouses</u>	<u>Rate</u>
D.no.354	Satin Georgette With Pleated (crush)	Heavy embroidered Blouses with net embroidered sleeves.	2350/-
D.no.361	Soft silk with self-jacquard royal checks design.	Heavy embroidered Blouses.	1700/-
D.no.373	Satin Georgette With Pleated (crush) and pure Swarovski work.	Heavy velvet and Swarovski work with Swarovski velvet belt.	1920/-
D.no.381	Bamberg Georgette with heavy sequin work and velvet Swarovski work.	Bangalore silk.	2320/-

















**MEHAK**  
SAREES

D.No.381-B



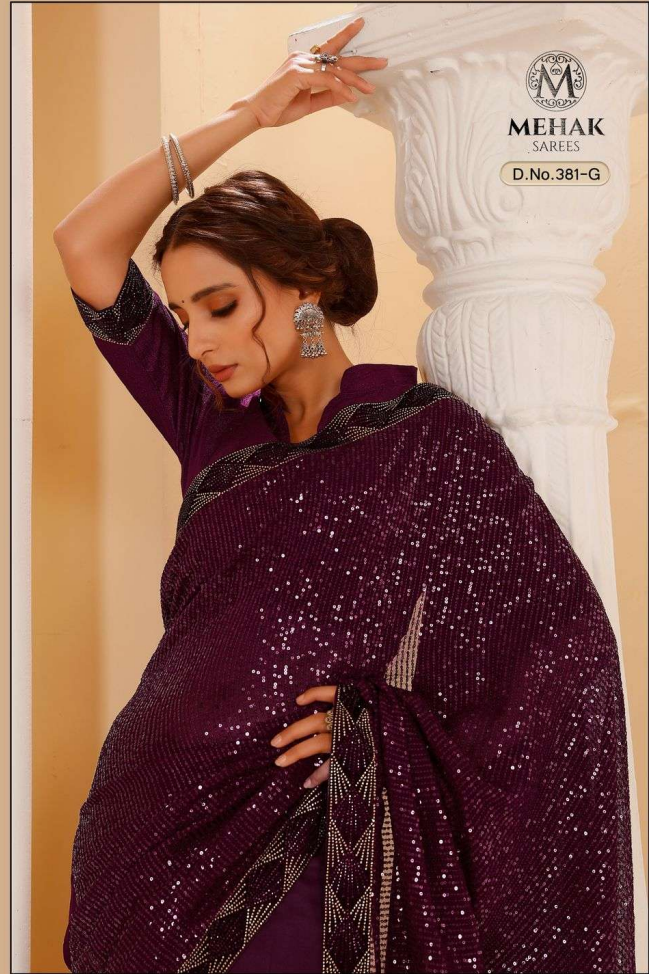
शुभकामना  
सर्वत्र  
प्रदत्तवन्तु  
सर्वदा  
सर्वदा  
सर्वदा

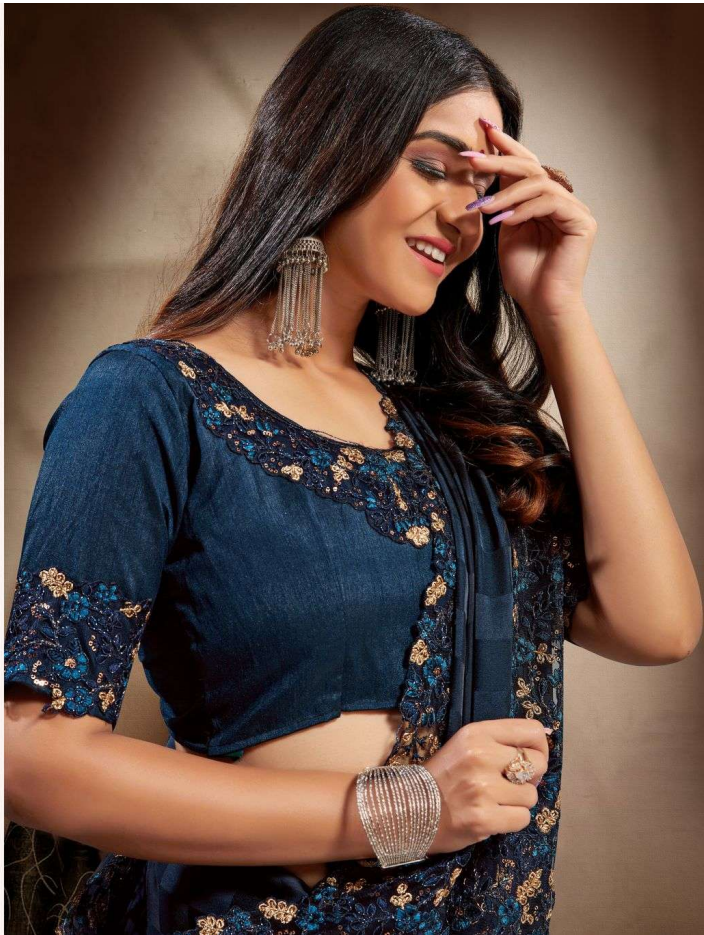
















MEHAK  
SAREES

D.No.381-E











D.No.361-D





*Fashion*  
is your  
passion...

From rainbow colors of saree-yes, each saree gives different look-to electro



361 - A







**MEHAK**  
SAREES



*Satranqi*





D.No.361-E





MEHAK  
SAREES

D.No.381-C





*Weaved*  
with an  
artful soul...



SOMETHING DIFFRENT & NEW LOOK  
354 E

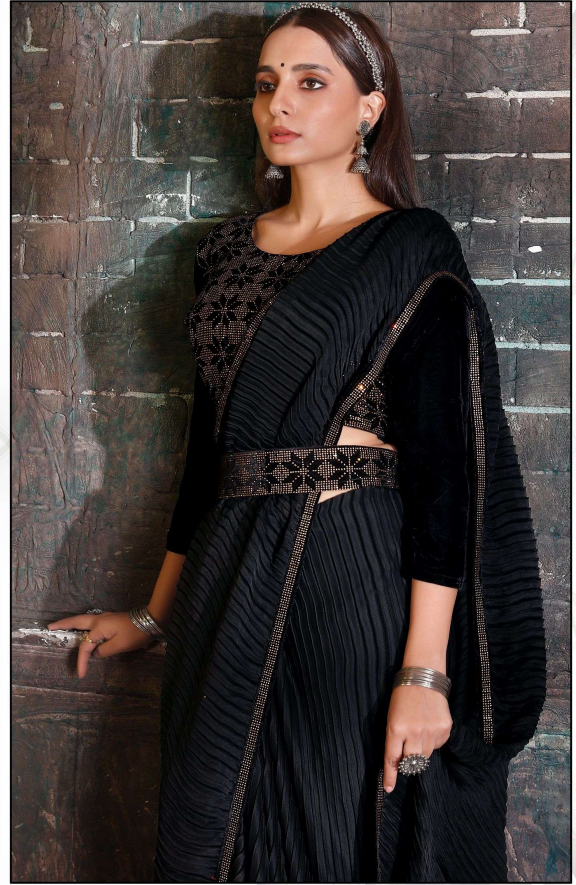




*Weaved*  
with an  
artful soul...  
SOMETHING DIFFRENT & NEW LOOK  
354 C









354-A

354-B

354-C



373-B

373-C

373-D



354-D

354-E

361-A



373-E

381-A

381-B



361-B

361-C

361-D



381-C

381-E

381-F



361-E

361-F

373-A



381-G



*Fashion*  
is your  
passion...

From rainbow colors of saree-yes, each saree gives different look-to electro



354 B

