



D.NO.9905



D.NO.9901



D.NO.9901



D.NO.9901



D.NO.9901



D.NO.9901



D.NO.9902



D.NO.9902



D.NO.9902



D.NO.9902



D.NO.9902



D.NO.9902



D.NO.9903



D.NO.9903



D.NO.9903



D.NO.9903



D.NO.9903



D.NO.9904



D.NO.9904



D.NO.9904



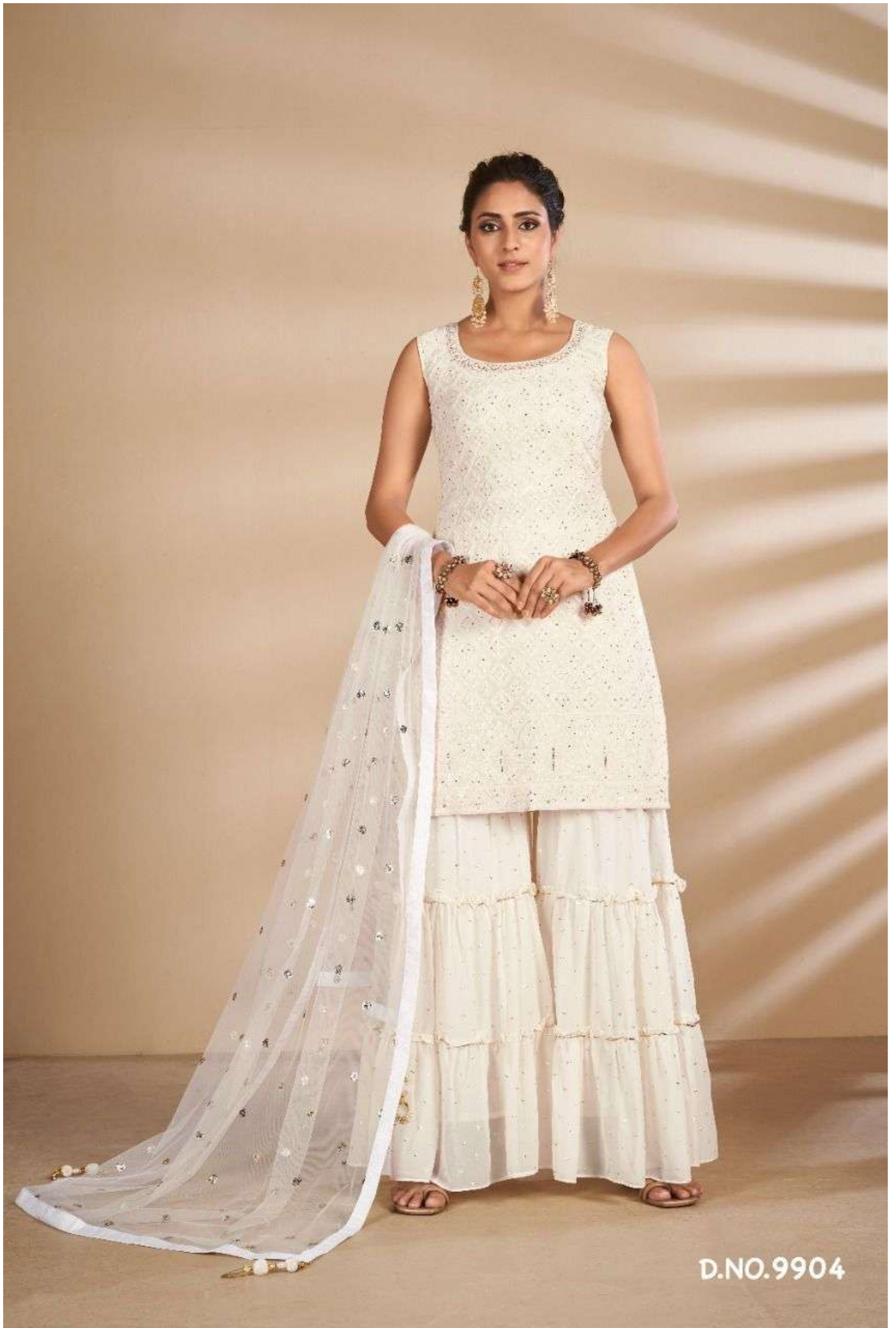
D.NO.9904



D.NO.9904



D.NO.9904



D.NO.9904



D.NO.9905



D.NO.9905



D.NO.9905



D.NO.9905



D.NO.9905



ARYA DESIGNS

VOLUME - 27



SKU	MAIN COLOUR	BLOUSE FACRIC	LEHANGA FABRIC	DUPATTA FABRIC	SIZE (SEMI STICH)	WORK	PRICE
9901	CHERRY RED	GEORGETTE	GEORGETTE	SOFT NET	L(38), XL(40)	THREAD, SEQUINS	3630/- (FLAT) 5%(GST) +SHIPPING.
9902	NAVY BLUE	GEORGETTE	GEORGETTE	SOFT NET	L(38), XL(40)	THREAD, SEQUINS	3630/- (FLAT) 5%(GST) +SHIPPING.
9903	DARK GREEN	GEORGETTE	GEORGETTE	SOFT NET	L(38), XL(40)	THREAD, SEQUINS	3630/- (FLAT) 5%(GST) +SHIPPING.
9904	WHITE	GEORGETTE	GEORGETTE	SOFT NET	L(38), XL(40)	THREAD, SEQUINS	3630/- (FLAT) 5%(GST) +SHIPPING.
9905	RED	GEORGETTE	GEORGETTE	SOFT NET	L(38), XL(40)	THREAD, SEQUINS	3630/- (FLAT) 5%(GST) +SHIPPING.

TOTAL DESIGNS: 05 PCS

AVERAGE RATE: ₹ 3630/-

TOTAL AMOUNT : ₹ 18150/-

ALL RATES ARE FLAT NO DISCOUNT AND EXCLUSIVE OF GST AND SHIPPING