



Hiranyam <sup>VOL-01</sup>  
by **Aaawiya™**







































































2103

























2104

































2105



# Hiranyam

VOL-01

आaawiya™



आaawiya™





Hiranyam <sup>VOL-01</sup>  
by  Aaawiya™



**Aaawiya™**

# Hiranyam

VOL-01



**WEIGHT: 1.8KG**

SKU	MAIN COLOUR	LEHENGA FABRIC	BLOUSE FABRIC	DUPATTA FABRIC	WORK TYPE	SIZE (SEMI STITCHED)	PRICE
2101	PINK	BANGLORI SATIN	BANGLORI SATIN	HEAVY NET	FLORAL PRINT, DORI, ZARI AND SEQUINS EMBROIDERY	UP TO 42 BUST AND WAIST	2745/-
2102	BLACK	BANGLORI SATIN	BANGLORI SATIN	HEAVY NET	FLORAL PRINT, DORI, ZARI AND SEQUINS EMBROIDERY	UP TO 42 BUST AND WAIST	2745/-
2103	ROSY BROWN	BANGLORI SATIN	BANGLORI SATIN	HEAVY NET	FLORAL PRINT, DORI, ZARI AND SEQUINS EMBROIDERY	UP TO 42 BUST AND WAIST	2745/-
2104	WHITE	BANGLORI SATIN	BANGLORI SATIN	HEAVY NET	FLORAL PRINT, DORI, ZARI AND SEQUINS EMBROIDERY	UP TO 42 BUST AND WAIST	2745/-
2105	PISTA	BANGLORI SATIN	BANGLORI SATIN	HEAVY NET	FLORAL PRINT, DORI, ZARI AND SEQUINS EMBROIDERY	UP TO 42 BUST AND WAIST	2745/-

**TOTAL DESIGNS 5 PCS.**

**TOTAL AMOUNT : 13725/-**

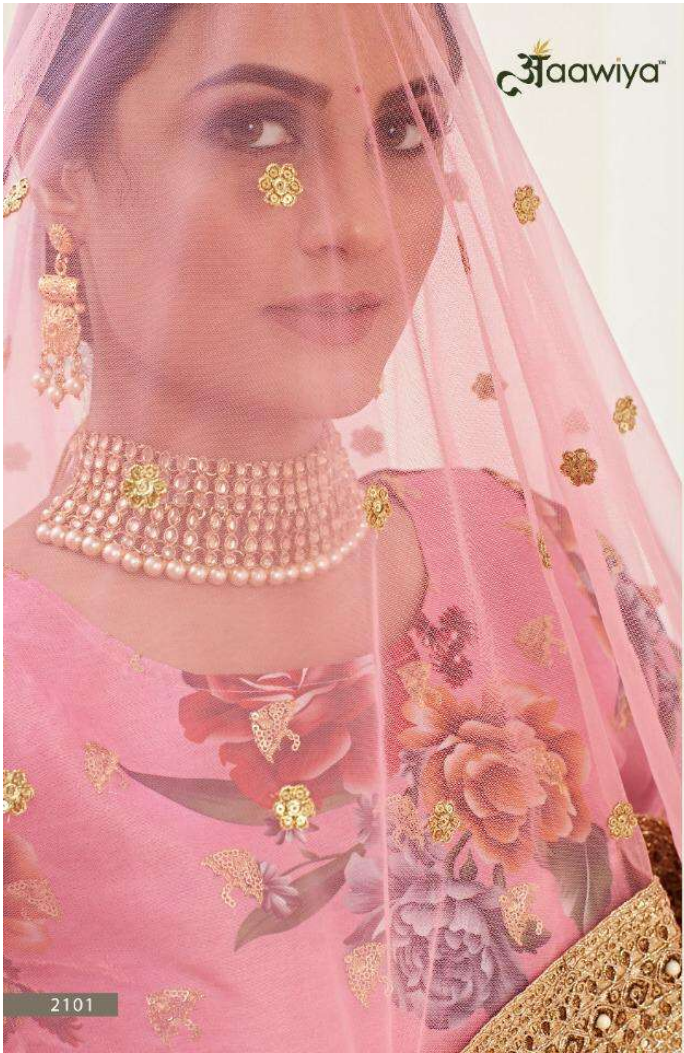
DIGITAL PRINT WITH DORI, SEQUINS EMBROIDERED BORDER AND PEARL WORK.

LEHENGA FLAIR : 3.50 MTR  
INNER : ART SILK WITH 19' INCH CAN-CAN LAYERED NET.  
SIZE : WAIST-43" HEIGHT-43"

BLOUSE (UNSTITCHED)  
FABRIC : BANGLORY SATIN  
WORK : JARI SEQUINS BUTTI WORK  
COME WITH 1MTR FABRIC

DUPATTA FABRIC : NET  
WORK : DORI, SEQUINS EMBROIDERED  
BORDER AND PEARL WORK.  
LENGTH: 2.25 MTR





2101



2101



2102



2103



2104

Aaawiya



2105

Hiranyam

VOL-01  
Aaawiya  
OFFICIAL