



BREEZE

By

nakkashi[®]
ETHNIC PERFECTION AT ITS FINEST



BREEZE

By

nakkashi[®]
ETHNIC PERFECTION AT ITS FINEST



REIMAGINING FASHION #3087



nakkashi

Every collection is a journey of imagination, sparked by a wonderful piece of fabric, a fine detail or a substantial idea.

nakkashi
FASHION DESIGNER SINCE 1975

Whether you are a bride-to-be or a fashionista with a mind to break,
this is one collection that will catch your fancy and stay in your 20th Anniversary collection.



A WOMAN'S DREAM #3091

With beauty in a wonderful garment, nothing, cannot be done but to bring the drama to dream.

nakkashi
ETHEREAL PRODUCTIONS BY PUNJABI

CRIMSON TIDE



#3091

nakkashi
ESTABLISHED 1988

© 2018 Nakkaashi. All rights reserved. For more information, visit us at www.nakkashi.com

CRIMSON TIE

#3091

FESTIVE RED COLOUR
MODAL SATIN GOWN HAVING
LEATHER SOULI WORK
ON IT PAIRED WITH
MATCHING CHIFFON BLOUSE



nakkashi
L'UNIQUE PAKISTANI FASHION

All those glittering gold on silver palette to add a touch and with your attire
be a charmer with confident smile!



GLITTERING FLAIR #3092



Add some glittering gold in olive palette to add a little fest with your attire. Be a fashion walk confident model!

nakkashi
FABRIC PRODUCTIONS BY PUNJAB

GLITTERING FURIA

BOTTLE GREEN MODAL
SATIN GOWN WITH SEQUIN
TEXTURED YOKE AND
RESHAM WORK KALIS
PAIRED WITH MATCHING DUPATTA

#3092



nakkashi
ETERNAL PERFECTION IN EVERY

*Thinly stretched, natural chise and a whiff of paper blue. All in all,
just the perfect ensemble for the woman who finds value in extravagance.*

NEUTRAL TERRITORY #3093



nakkashi
FROM TRADITIONAL TO MODERN

ETHEREAL ALLURE #3093

*Make an unforgettable impression with Nakkashi's sheer elegance, subtle hues and confident statement.
Every perfectly crafted piece strikes the delicate balance between contemporary style and classic charm.*

nakkashi
LIVING PERFECTION M. EL. HAKKI



NEUTRAL TERRITORY 2022

Perfekte Harmonie, die sich in der Mitte findet. Einzigartig und unverwundbar. Einzigartig und unverwundbar.



YBROWNISH GREY COLOUR
MODAL SATIN GOWN
WITH ZARI WORK ON IT
PAIRED WITH CHIFFON DUPATTA



#3087



#3088



#3091



#3092



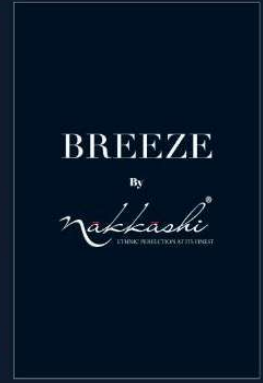
#3089



#3090



#3093



BREEZE

GOWN (FULL STICH)

SR.NO.	D.NO	Gown	STICH	Dupatta	RATE
1	3087	Yellow Colour Modal Satin Fabrics With Mirror Work Embroidery	BUCRAM	Yellow Colour Chiffon fabrics	2445
2	3088	Pastel Green Colour Modal Satin Fabrics With Delicate Resham work	BUCRAM	Pastel Green Colour Chiffon Fabrics	2025
3	3089	Champagne Colour Modal Satin Fabrics,Blouse with Zari Embroidery	BUCRAM	Champagne Colour Chiffon Fabrics	2205
4	3090	Strong Arctic Blue Colour Modal Satin Fabrics With Sequin Work	BUCRAM	Strong Arctic Blue Colour Chiffon Fabrics	2625
5	3091	Festive Red Colour Modal Satin Fabric With Leather Sequin Work	BUCRAM	Festive Red Colour Chiffon Fabrics	2385
6	3092	Bottle Green Colour Modal Satin Fabrics With Sequin Texured Yoke & Resham Work Kalis	BUCRAM	Bottle Green Colour Chiffon Fabrics	2135
7	3093	Ybrownish Grey Colour Modal Satin Fabrics With Zari Work	BUCRAM	Ybrownish Grey Colour Chiffon Fabrics	2355
		TOTAL			16175/-
		AVERAGE			2310/-
NOTE :-		Gown Are Ready To wear For Size 40" But Can Be Altered Uptill 36" To 44" Length-56"			



nakkashi

STARTLING
PANACHE

#3087

A burst of fresh air comes alive in the form of this
amber ensemble, which gives perfectly playful vibe with
the new season.

nakkashi
DESIGN. PRODUCTION. ARTISTRY.



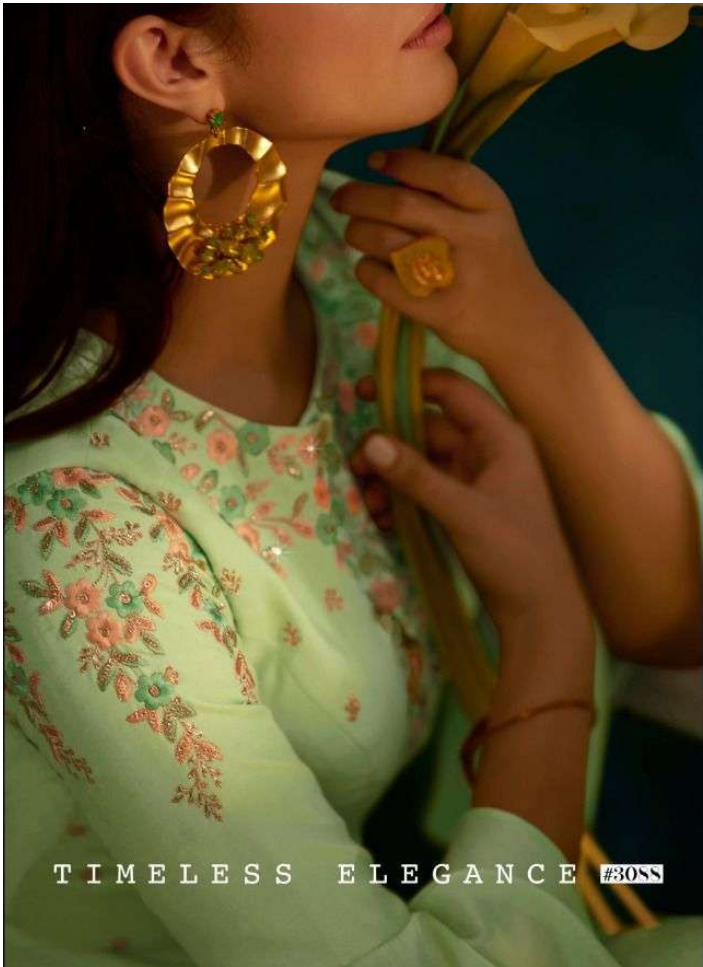
Startling Panache

A burst of fresh air comes alive in the form of this amber ensemble, which gives perfectly playful vibe with the new season.

#3087



YELLOW MOOAL
SATIN GOWN
WITH EMBROIDERY
WORK EMBROIDERY
ON IT PAIRED WITH
YELLOW CHIFFON DUPATTA



nakkashi®
LUXURY FASHION DESIGNERS

*Embellished with floral embroidery,
the exquisite mint green gets a makeover for the new vision of party wear.*

TIMELESS ELEGANCE #30SS



Timeless Elegance

Nakkashi
CLASSIC FASHION FOR THE MODERN WOMAN

Photography: @Rishi, Makeup: @TheRoyalBeauty, Hair: @TheRoyalBeauty, Styling: @TheRoyalBeauty

PASTEL GREEN MODAL
SATIN GOWN WITH DELICATE
RESHAM WORK ON IT
PAIRED WITH PASTEL
GREEN CHIFFON DUPATTA

#30SS

nakkashi
FABRIC PERFECTION MEETS FASHION



REFLECTING YOU #30S9

Feel like you've stepped straight out a regal empire; and your dream of looking like a princess is just accomplished!



And like you're stepping straight out a royal empire with your dream of looking like a princess is just accomplished!

nakkaashi
DESIGNER FASHION

REFLECTING YOU



CHAMPAGNE COLOUR
MODAL SATIN
BLOUSE WITH
ZARI EMBROIDERY
ON IT PAIRED WITH
CHAMPAGNE COLOUR
GHEFON DUPATTA

#3089



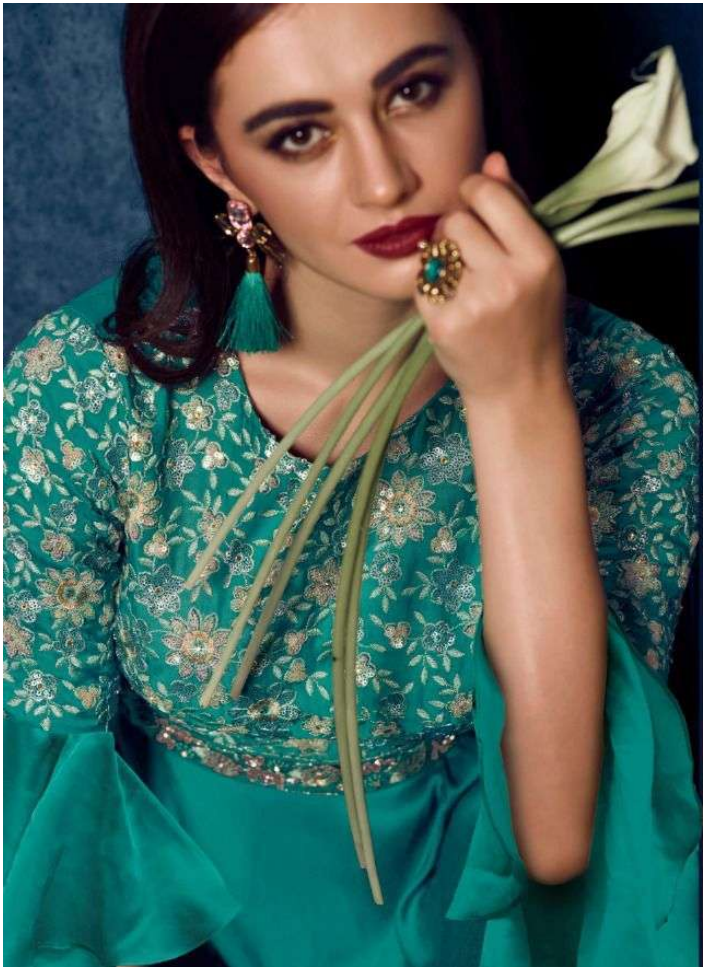
nakkashi
TRADITIONAL PRODUCTION OF PUNJAB



SIGNATURE EPISODE #3090

Flowing fabrics, fuss-free styling, and timeless elegance are our signature style and present in every garment handcrafted under Nakkashi.





SIGNATURE EPISODE

Flawless fabric, just the styling, and timeless elegance are our signature style and present in every garment handcrafted under Nakkaashi.

nakkashi
FINDING PERFECTION IN EVERYTHING



#3090

STRONG ARCTIC
BLUE COLOUR
MODAL SATIN
GOWN WITH
SEQUIN WORK
ON IT PAIRED
WITH MATCHING
CHIFFON DUPATTA