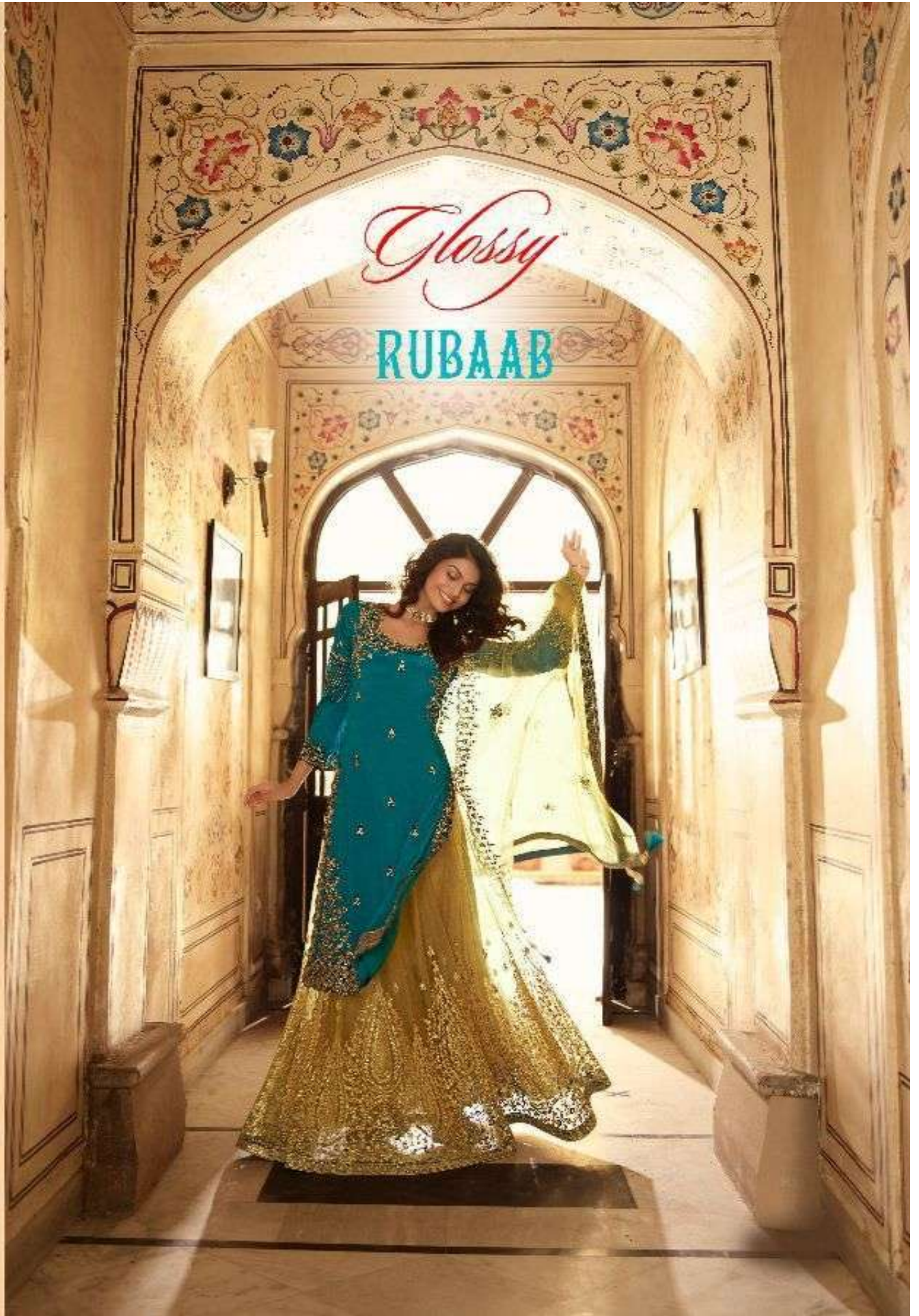


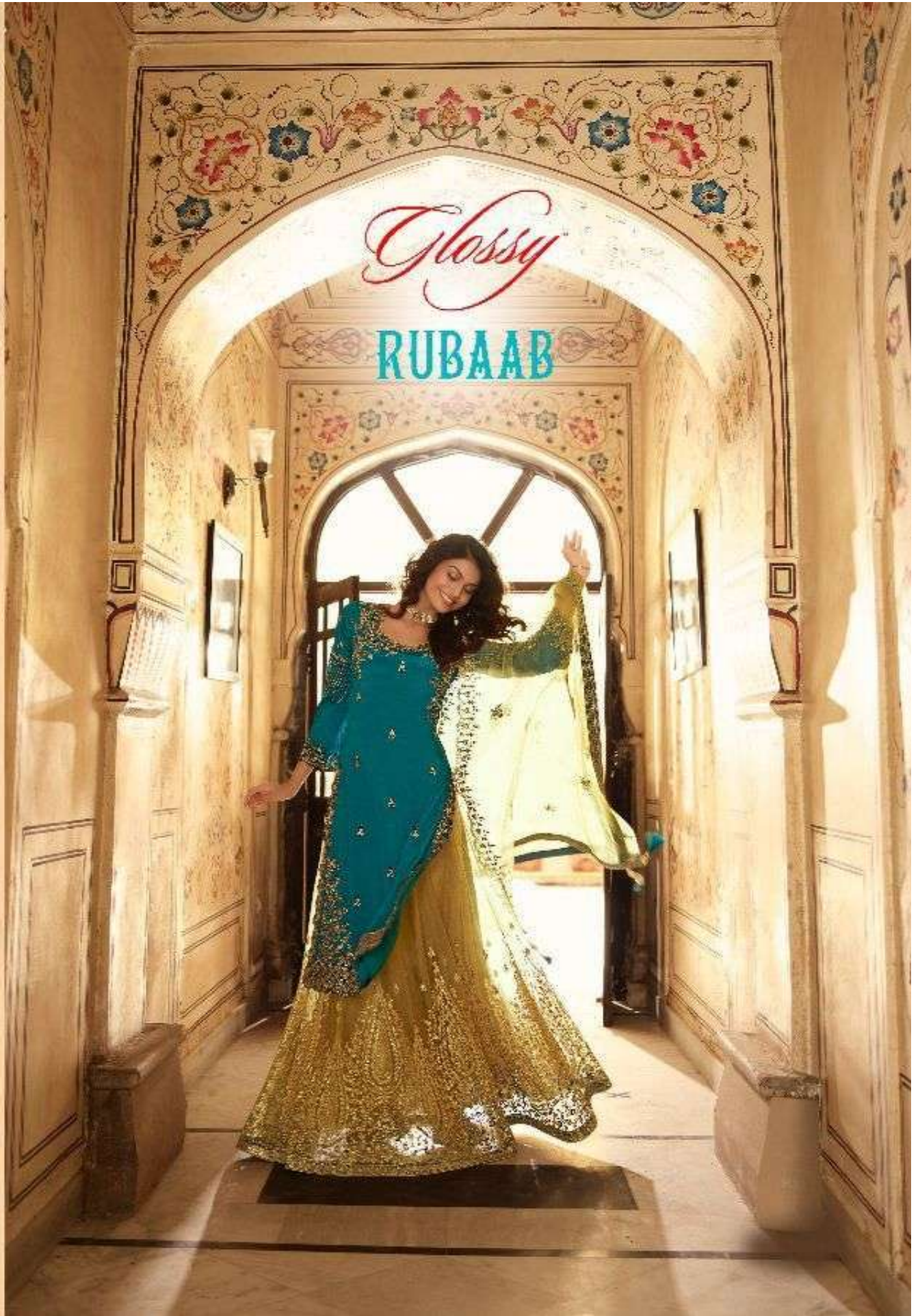
Glossy

RUBAAB



Glossy

RUBAAB



Glossy

RUBAAB

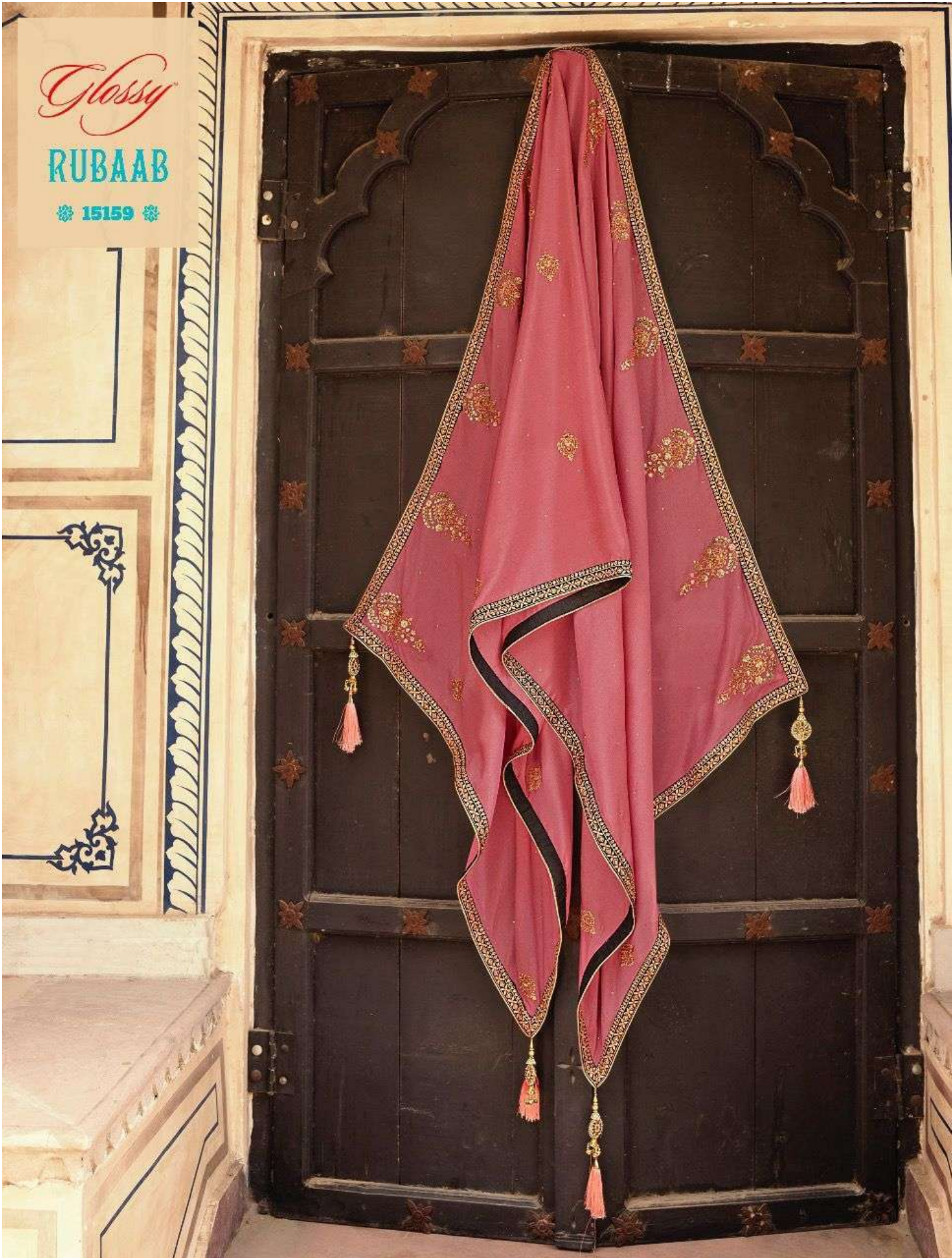
15156



Glossy

RUBAAB

❁ 15159 ❁







Glossy

✻ 15160 ✻









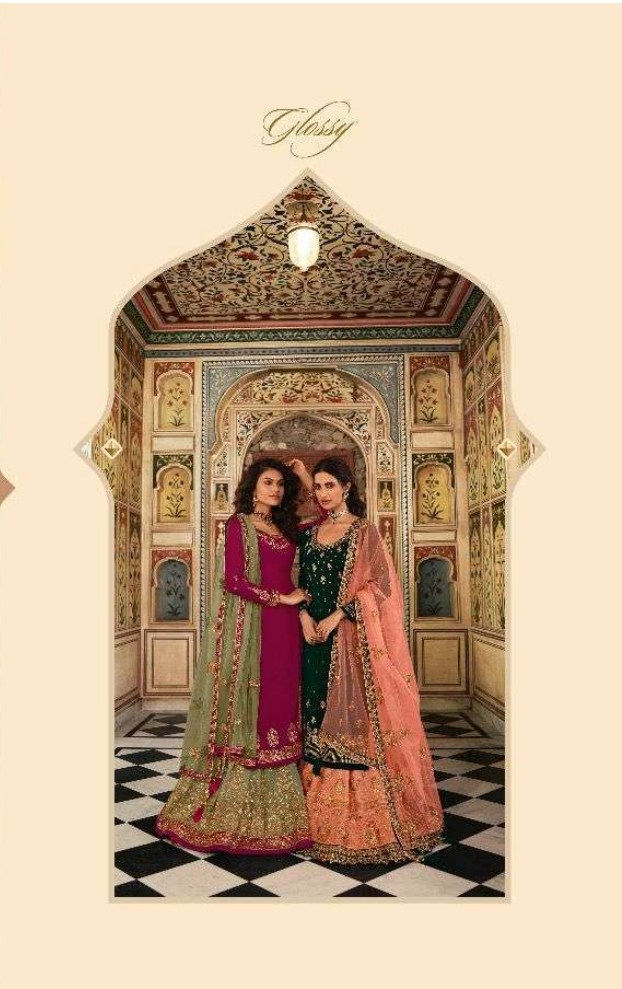
Glossy
RUBAAB
❁ 15162 ❁



Glossy

RUBAAB

© 2014 ©



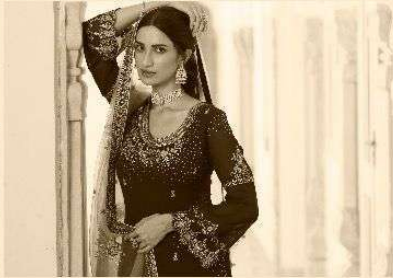
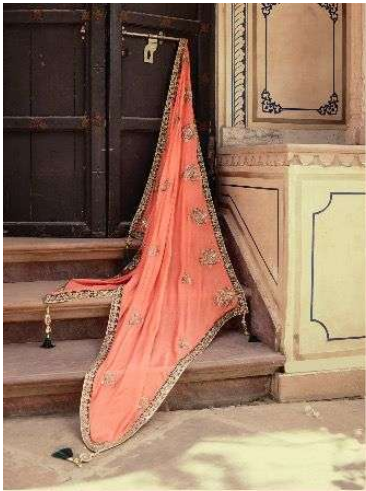


Ruby
RUBAAB
15163

Glossy

15163





Glossy





Glossy

RUBAAB

❁ 15160 ❁



Glossy

RUBAAB



S G CREATIONS

PRODUCT DETAILS

DESIGN NO.	TOP	BOTTOM	DUPATTA
15156	PURE CHINON WITH EMBROIDERY & SWAROVSKI WORK WITH (INNER SANTOON)	PURE NET EMBROIDERY (INNER SANTOON) WITH SWAROVSKI WORK	PURE CHINON / NET EMBROIDERY WITH SWAROVSKI WORK
15157	GEORGETTE WITH EMBROIDERY & SWAROVSKI WORK WITH (INNER SANTOON)	PURE NET EMBROIDERY (INNER SANTOON) WITH SWAROVSKI WORK	PURE CHINON / NET EMBROIDERY WITH SWAROVSKI WORK
15158	GEORGETTE WITH EMBROIDERY & SWAROVSKI WORK WITH (INNER SANTOON)	GEORGETTE EMBROIDERY (INNER SANTOON) WITH SWAROVSKI WORK	PURE CHINON / NET EMBROIDERY WITH SWAROVSKI WORK
15159	PURE CHINON WITH EMBROIDERY WORK WITH (INNER SANTOON)	PURE NET EMBROIDERY (INNER SANTOON) WITH SWAROVSKI WORK	PURE CHINON / NET EMBROIDERY WITH SWAROVSKI WORK
15160	PURE CHINON WITH EMBROIDERY & SWAROVSKI WORK WITH (INNER SANTOON)	GEORGETTE EMBROIDERY WORK (INNER SANTOON)	PURE CHINON / NET EMBROIDERY WITH SWAROVSKI WORK
15161	GEORGETTE WITH EMBROIDERY & SWAROVSKI WORK WITH (INNER SANTOON)	GEORGETTE EMBROIDERY (INNER SANTOON) WITH SWAROVSKI WORK	PURE CHINON / NET EMBROIDERY WITH SWAROVSKI WORK
15162	PURE CHINON WITH EMBROIDERY & SWAROVSKI WORK WITH (INNER SANTOON)	PURE NET EMBROIDERY (INNER SANTOON) WITH SWAROVSKI WORK	PURE CHINON / NET EMBROIDERY WITH SWAROVSKI WORK
15163	GEORGETTE WITH EMBROIDERY & SWAROVSKI WORK WITH (INNER SANTOON)	GEORGETTE EMBROIDERY (INNER SANTOON) WITH SWAROVSKI WORK	PURE CHINON / NET EMBROIDERY WITH SWAROVSKI WORK



❖ 15158 ❖



❖ 15159 ❖



❖ 15162 ❖



❖ 15163 ❖

Glossy

RUBAAB

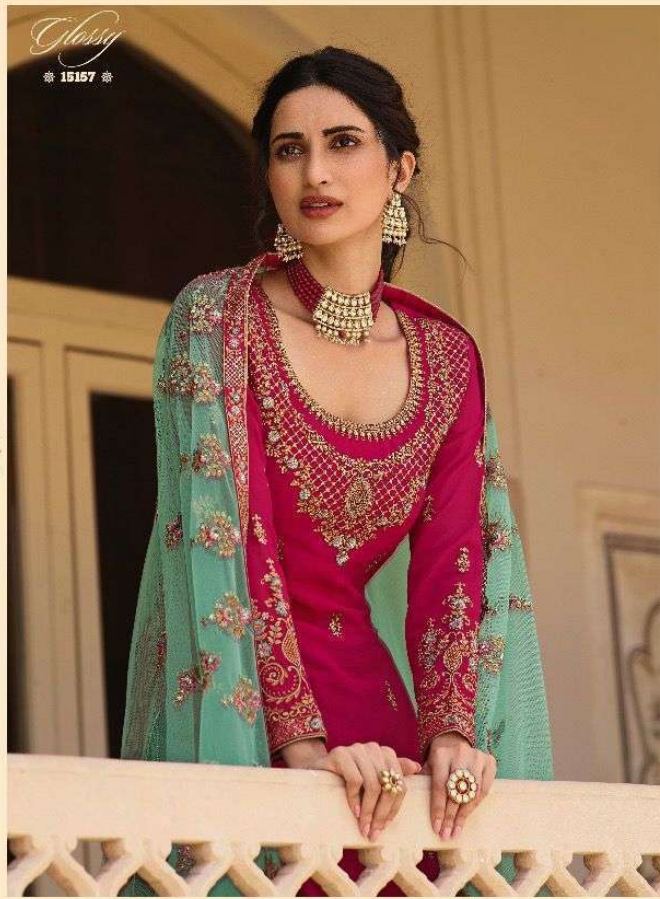






Glossy
* 15157 *







Glossy
RUBAAB
❁ 15157 ❁

Glossy

✻ 15158 ✻



Glassy

RUBAAB

❁ 15158 ❁



Glossy



15159

