



2103



2101



2102





2103



2104



2105





DESIGN NO.	BLAZER FABRIC	PRICE (without GST)
2101	SUITING FABRIC (67% POLYESTER & 33% VISCOSE)	1950/-
2102	SUITING FABRIC (67% POLYESTER & 33% VISCOSE)	1950/-
2103	SUITING FABRIC (67% POLYESTER & 33% VISCOSE)	1950/-
2104	SUITING FABRIC (67% POLYESTER & 33% VISCOSE)	1950/-
2105	SUITING FABRIC (67% POLYESTER & 33% VISCOSE)	1950/-

- 12% GST Extra Aplicable On Prices | - Chest Sizes : 36 to 46 (inches)
- NOTE : 10% Extra Charge for Chest Size Above 42 inches.



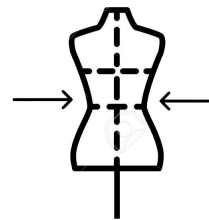
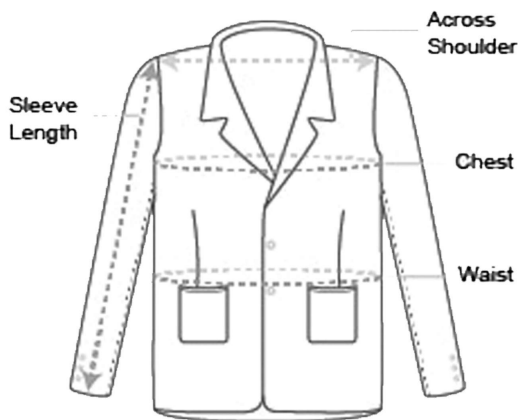
SIZE CHART

INCHES

MEN BLAZERS

SIZE	SLEEVE LENGTH	CHEST	SHOULDER	FRONT LENGTH	WAIST
34	24.5	34	16.5	27.5	33
36	24.5	36	16.5	28	34
38	25	38	17.5	29	36
40	25.5	40	18.5	30	38
42	25.5	42	19	30	40
44	26	44	19	31	44
46	26	46	20	31	46

HOW TO MEASURE YOURSELF



STILL NOT SURE ABOUT YOUR PERFECT SIZE AND FIT?
OUR ADVISORS CAN PROVIDE DETAILED
INFORMATION FOR ANY OF OUR PRODUCT.