



2204



2201



2202





2203



2204



WJ
NEW



2205



2206





| DESIGN NO. | JODHPURI FABRIC | PRICE (without GST) |
|------------|-----------------|------------------------|
| 2201 | SPAN COTTON | 1950/- |
| 2202 | SPAN COTTON | 1950/- |
| 2203 | SPAN COTTON | 1950/- |
| 2204 | SPAN COTTON | 1950/- |
| 2205 | SPAN COTTON | 1950/- |
| 2206 | SPAN COTTON | 1950/- |

- 12% GST Extra Applicable On Prices | - Chest Sizes : 36 to 46 (inches)
- NOTE : 10% Extra Charge for Chest Size Above 42 inches.



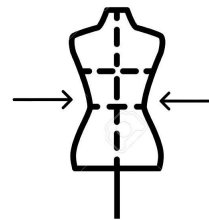
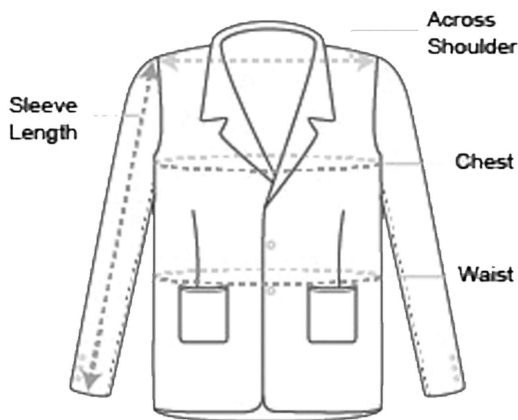
SIZE CHART

INCHES

MEN JODHPURI

| SIZE | SLEEVE LENGTH | CHEST | SHOULDER | FRONT LENGTH | WAIST |
|------|---------------|-------|----------|--------------|-------|
| 34 | 24.5 | 34 | 16.5 | 27.5 | 33 |
| 36 | 24.5 | 36 | 16.5 | 28 | 34 |
| 38 | 25 | 38 | 17.5 | 29 | 36 |
| 40 | 25.5 | 40 | 18.5 | 30 | 38 |
| 42 | 25.5 | 42 | 19 | 30 | 40 |
| 44 | 26 | 44 | 19 | 31 | 44 |
| 46 | 26 | 46 | 20 | 31 | 46 |

HOW TO MEASURE YOURSELF



STILL NOT SURE ABOUT YOUR PERFECT SIZE AND FIT?
OUR ADVISORS CAN PROVIDE DETAILED
INFORMATION FOR ANY OF OUR PRODUCT.