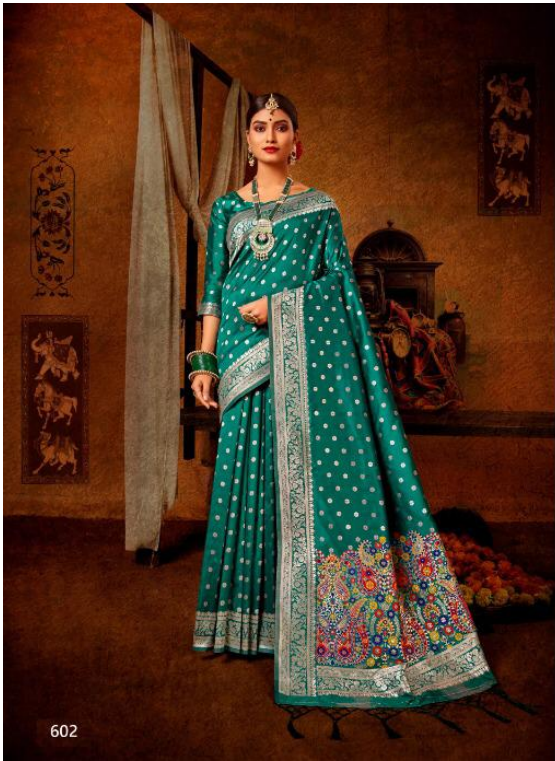


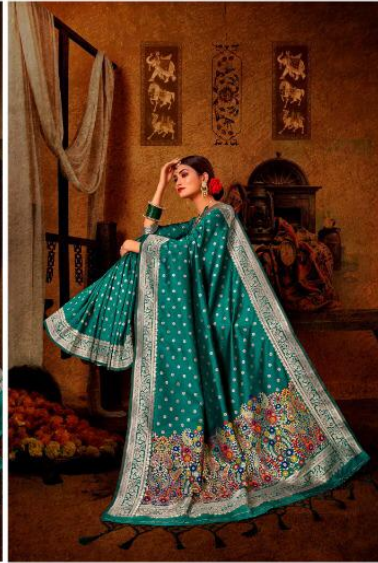
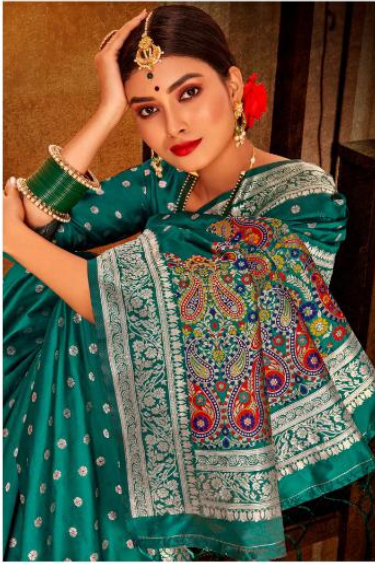


SHRUTI TEXTILE
ESSENCE OF ELEGANCE

शुभकामनाएं



602





SHRUTI TEXTILE
ESSENCE OF ELEGANCE

शुभकामनाएं



601



RAISING THE BAR OF STYLE IS THE BLOSSOMING OF THE ROSE PINK CHEMISE. THE ALLURING WORK AT THE NECKLINE SETS IT APART, STIRRING UP AN EXCITEMENT AND HIGHLY ENTICING.

Chiara



KADAMBERG, WAHITH AND LUTHERS IS THE DANCING, RENDU, FEEL AND STEE THE
CONTRASTED BEYOND SEA BLENDING PLAYS TO THE FLOWING, SKILL CLOUSING, A CLASSIC STEE
AND CLAY'S DELICIOUS OF THE MOUNTAIN AND MOUNT PROMISE TO BE A FINEST LINE.





601



602



603



607



608



609



604



605



606



610



611



612

SB



KUDRANKING, WAJIBAH AND LORNAKAS IS THIS SANGRAME, REKAP OF PISH AND SEVA. THE
CONTRAST TO WAJIBAH IS A GROWN PISH IN THE SANGRAME, SANGRAME IS A CLASSIC STYLE
AND GRACE. THE CUT-OUT AT THE SLEEVES AND NECK PROMISES TO BE A THUNDERSTRIKE.





SHRUTI TEXTILE
ESSENCE OF ELEGANCE

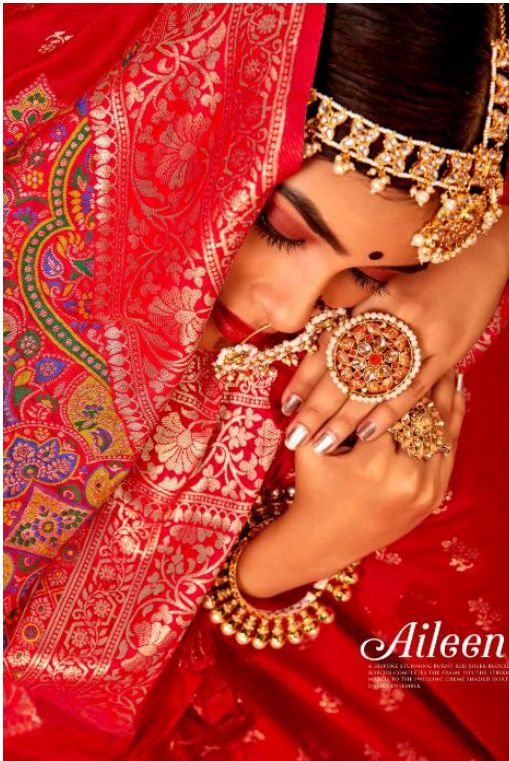
शुभकामनाएं



SHUBHKAMNAYE DESIGNWISE RATE

Sr. No	PROD. D.NO	CATALOG D.NO.	RATE (Rs)
1	SO-110	601	₹ 995
2	SO-110	602	₹ 995
3	SO-110	603	₹ 995
4	SO-110	604	₹ 995
5	SO-110	605	₹ 995
6	SO-110	606	₹ 995
7	SO-113	607	₹ 995
8	SO-113	608	₹ 995
9	SO-113	609	₹ 995
10	SO-113	610	₹ 995
11	SO-113	611	₹ 995
12	SO-113	612	₹ 995





S: *Aileen Allure*

A WOMAN'S DRESSING BECOMES HER SECOND SKIN. IN A HENNA, THE DELICATE ARTISTRY ON THE SKIN COMPLETES THE PICTURE. THE STRANDS TAKE LIFE FROM HER HAIR. A NECKLINE, BORN BY THE TANGING CREAM, BRINGS TOGETHER THE BOLD, ORANGE PATTERNS WITH THE SUBTLE, PINK.

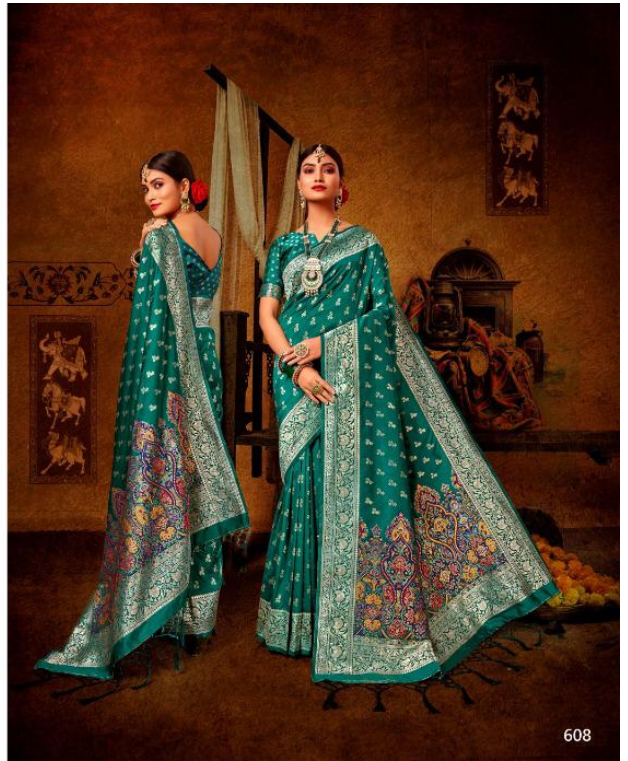


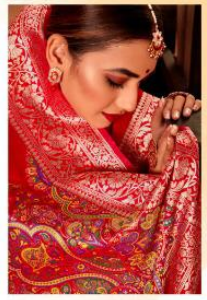


SB

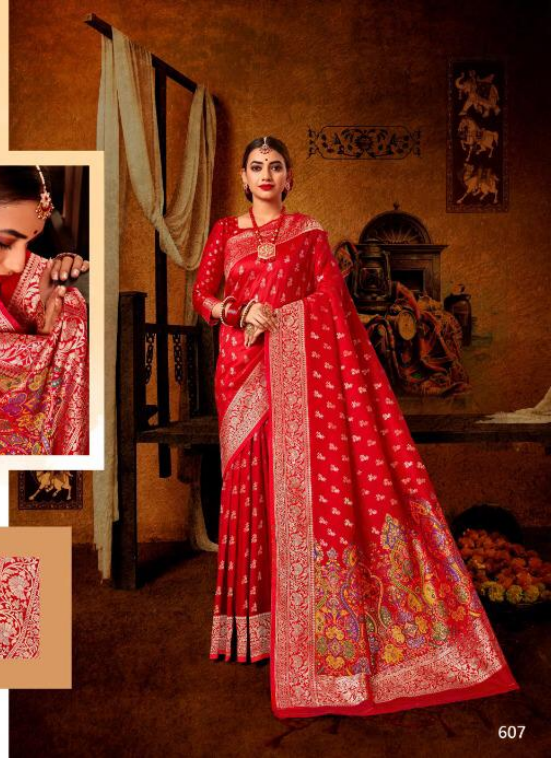


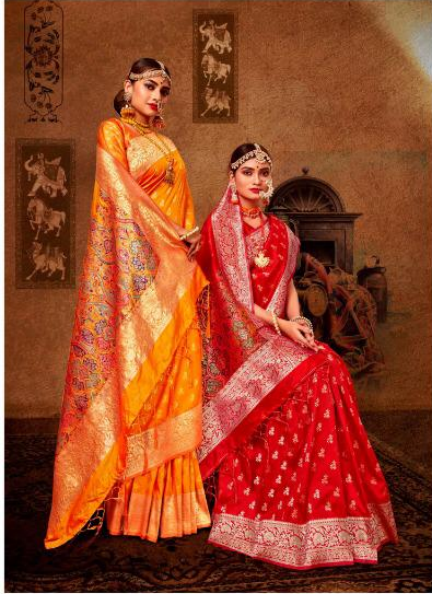
Amaris





AN EXCELLENT FUSION OF CLASSIC AND CONTEMPORARY THE PEDESTALIC LOOKING INKITE CONTOUR ENHANCES THE STYLE QUOTIENT OF THE WEARER. MAKING HER A FASHION ICON. THE BUSTLING, TIGHT FITTING CHESTERS WITH STYLISH FORMAL EMBROIDERY GIVES A TOUCH OF GENTLE ROMANCE. WHILE THE SLEEVES GIVE IT AN ELEGANT LOOK.



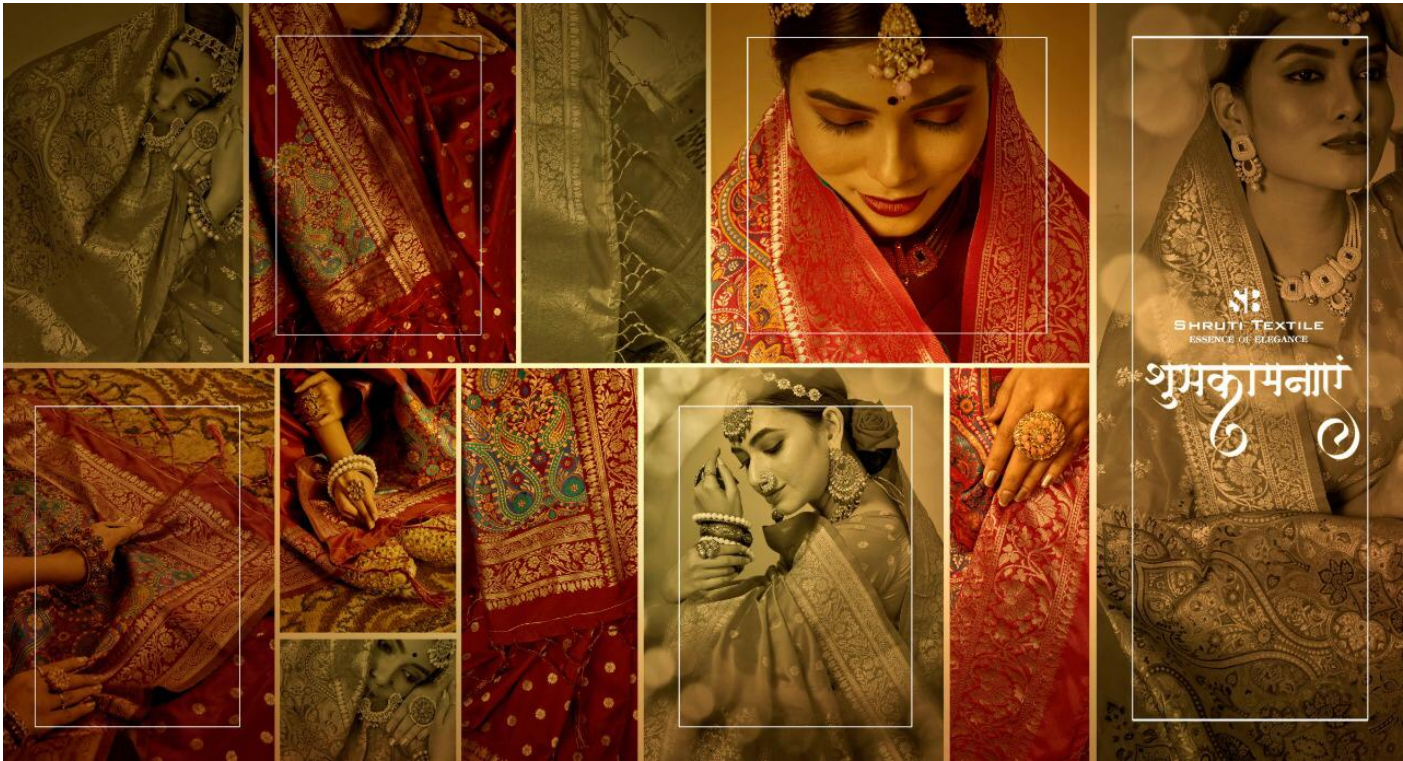


THIS SYMPHONY OF BRIGHT CYNA PRESENTED IN AN INNOVATIVE WAY MAKES A WEARER LOOK LIKE A PRINCESS. THE CLASSIC SILK GREENISH BLUE BLOUSE WORKS IN PERFECT TANDEM WITH THE GRACEFUL SAREE, MAKING THEM AN IDEAL WEAR FOR A SEMI-FORMAL OCCASION.



SB





SHRUTI TEXTILE

ESSENCE OF ELEGANCE

शुभकामनाएं



S:
Aileen Allure

Aileen Allure



AILEEN ALLURE PRESENTS THE AILEEN ALLURE COLLECTION. THE AILEEN ALLURE COLLECTION IS A COLLECTION OF SAREES, BANGLES, NECKLACES, EARRINGS, AND RINGS. THE AILEEN ALLURE COLLECTION IS A COLLECTION OF SAREES, BANGLES, NECKLACES, EARRINGS, AND RINGS. THE AILEEN ALLURE COLLECTION IS A COLLECTION OF SAREES, BANGLES, NECKLACES, EARRINGS, AND RINGS.



