

1020
RURI



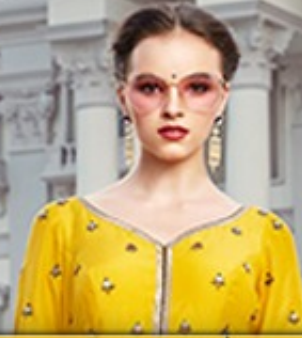
1016
RUPA



1018
RURI



TRARI VOL 4



DESIGN NO	FABRIC AND WORK	RATE
1015	SUIT FABRIC : HEAVY FAUX GEORGETTE. DUPATTA : NET DUPATTA WITH BORDER AND LATKAN INNER : HEAVY AMERICAN CRAPE	2455
1016	SUIT FABRIC : HEAVY FAUX GEORGETTE DUPATTA : NET DUPATTA WITH BORDER AND POMPOM LATKAN INNER : HEAVY AMERICAN CRAPE	2115
1017	SUIT FABRIC : ABCOTTAN WITH DIGITAL PRINT DUPATTA : NET DUPATTA WITH EMB BORDER AND LATKAN INNER : HEAVY AMERICAN CRAPE	2250
1018	SUIT FABRIC : HEAVY CHINON SILK WITH EMB. WORK INNER : HEAVY AMERICAN CRAPE	2620
1019	SUIT FABRIC : HEAVY KILLER SILK WITH DIGITAL PRINT DUPATTA : NET DUPATTA WITH EMB. WORK AND POMPOM LATKAN INNER : HEAVY AMERICAN CRAPE	2485
1020	SUIT FABRIC : HEAVY FAUX GEORGETTE WITH DIGITAL PRINT DUPATTA : NET DUPATTA WITH POMPOM LATKAN AND STONE WORK INNER : HEAVY AMERICAN CRAPE	1995
DETAILS : FULL STICED SUIT , EDITIONAL : KHATLI HANDWORK		
AVARAGE PRICE : 2320 TOTAL DESIGN : 06 , TOTAL AMOUNT : 13920		

1018
RURI



1015
RUKI



1017
RURI



1020
RURI



1019
RUPA



1020
RURI

