

A close-up portrait of a woman with dark hair, looking down. She is wearing a green and yellow Patiala outfit with intricate gold embroidery. She has large, ornate gold earrings. The background is softly blurred.

Kalarōop

FASHION OF PATIALA

Vol 27

A close-up portrait of a woman with dark hair, looking down. She is wearing a green and yellow Patiala outfit with intricate gold embroidery. She has large, ornate gold earrings. The background is softly blurred.

Kalarōop

FASHION OF PATIALA

Vol 27



12150



A close-up portrait of a woman with dark hair, looking down. She is wearing a green and yellow Patiala-style outfit with intricate gold embroidery. She has large, ornate gold earrings. The background is softly blurred.

Kalarōop

FASHION OF PATIALA

Vol 27





12141



12142



12143



12147



12148



12144



12145



12146



12149



12150

Kalaroop

LIFESTYLE & FABRICS PVT. LTD.

Has Launched New Catalogue

FASHION OF PATIALA-27

BOOK NOW

TOP :- Jam Silk with Work with Inner

BOTTOM :- Heavy Reyon with Work

DUPATTA :- Nazneen with Fancy Work

RATE :- 1049/-

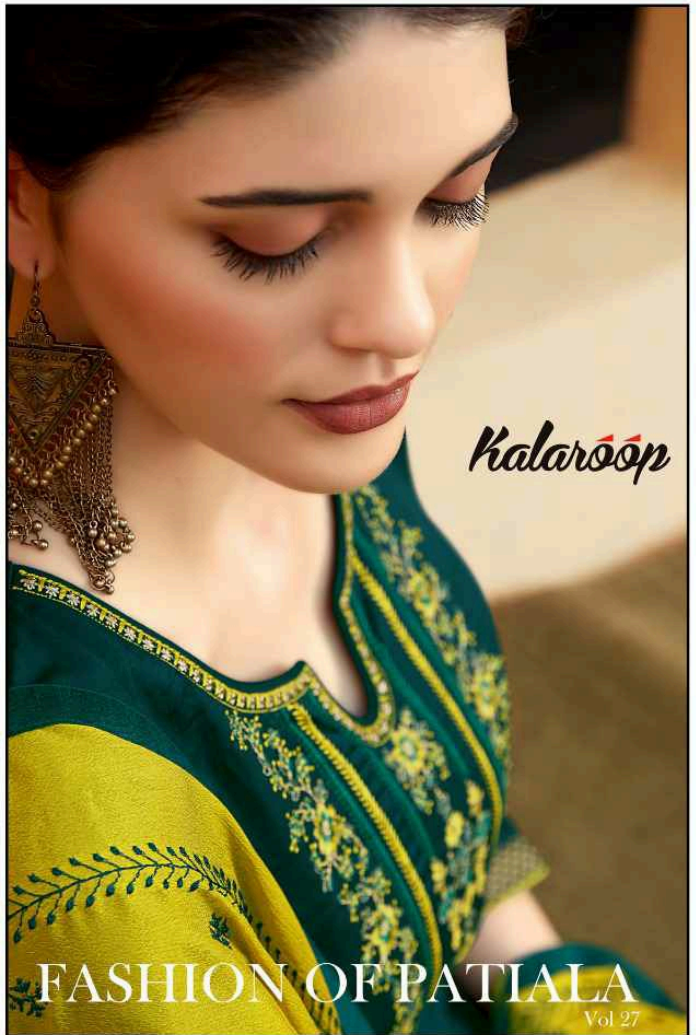
SIZE :- L, XL, XXL

No. of Designs :- 10

Dispatch within 5 to 6 days...

Booking Started From Now...

Book Your Oder ASAP...





12148













12145





