



A House of Ethnic Designer
Saree, Suits & Lehengas

A woman is the central focus, wearing a vibrant red Bandhej saree with intricate gold floral embroidery. She is also wearing a matching gold and red blouse with a wide, ornate border. Her accessories include a large, ornate gold choker necklace, matching earrings, and a large, round, pink and gold ring on her finger. She has a bindi on her forehead and is smiling warmly at the camera. The background shows ancient stone ruins under a clear sky.

Bandhej

Hits



⊗ D.NO.4240 ⊗





⊗ D.NO.4236 ⊗





A House of Ethnic Designer
Saree, Suits & Lehengas

A woman is the central focus, wearing a vibrant red Bandhej saree with intricate gold floral embroidery. She is also wearing a matching gold and red blouse with a wide, ornate gold border. Her accessories include a large, ornate gold choker necklace, matching earrings, and a large, ornate ring on her finger. She has a bindi on her forehead and is smiling warmly. The background shows ancient stone ruins under a clear sky.

Bandhej

Hits





D.NO.4231



D.NO.4232



D.NO.4233



D.NO.4234



D.NO.4235



D.NO.4236



D.NO.4237



D.NO.4238



D.NO.4239



D.NO.4240



⊗ D.NO.4235 ⊗





D.NO.4232



⊗ D.NO.4234 ⊗



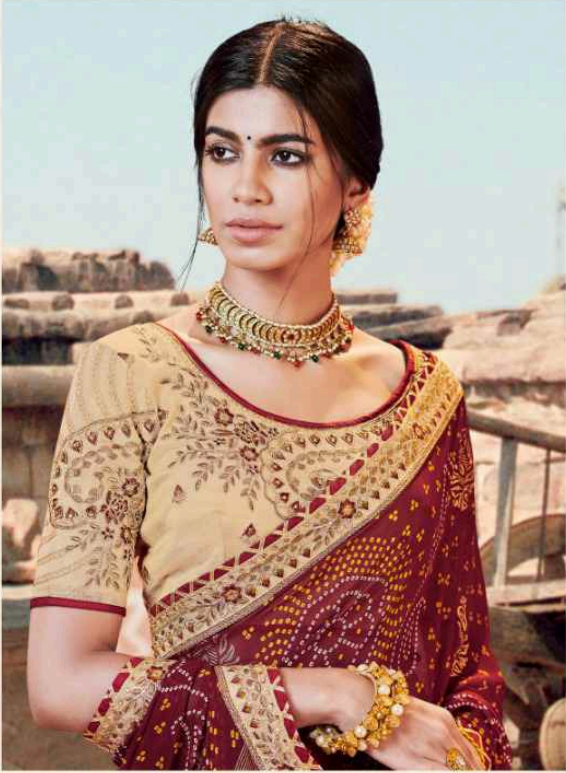


D.NO.4233



A House of Ethnic Designer
Saree, Suits & Lehengas





⊗ D.NO 4231 ⊗





A House of Ethnic Designer
Saree, Suits & Lehengas

A woman is the central focus, wearing a vibrant red Bandhej saree with intricate gold floral embroidery. She is also wearing a matching gold and red blouse with a wide, ornate border. Her accessories include a large gold choker necklace, matching earrings, and a ring on her finger. She has a bindi on her forehead and is smiling gently. The background shows ancient stone ruins under a clear sky.

Bandhej

Hits



D.NO. 4239

